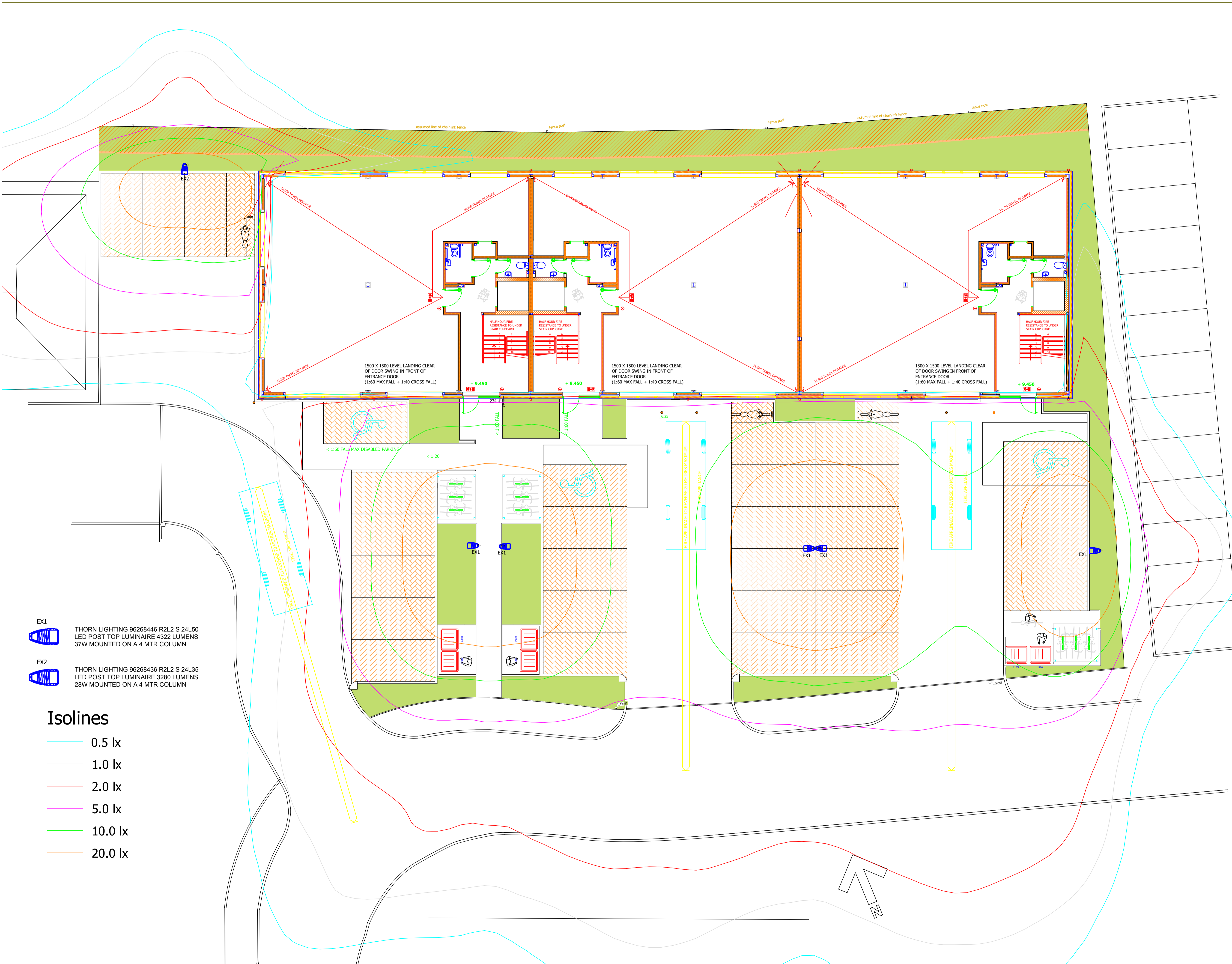


THIS DRAWING IS CONFIDENTIAL & THE COPYRIGHT OF PAINE MANWARING LTD. THE CONTENTS ARE NOT TO BE USED OR COPIED FOR ANY PURPOSE WHATSOEVER WITHOUT OUR PRIOR WRITTEN CONSENT

DO NOT SCALE

ALL DIMENSIONS IN MILLIMETRES EXCEPT WHERE OTHERWISE STATED



- EX1 THORN LIGHTING 96268446 R2L2 S 24L50 LED POST TOP LUMINAIRE 4322 LUMENS 37W MOUNTED ON A 4 MTR COLUMN
- EX2 THORN LIGHTING 96268436 R2L2 S 24L35 LED POST TOP LUMINAIRE 3280 LUMENS 28W MOUNTED ON A 4 MTR COLUMN

- Isolines**
- 0.5 lx
 - 1.0 lx
 - 2.0 lx
 - 5.0 lx
 - 10.0 lx
 - 20.0 lx

REV	DESCRIPTION	DATE

REVISORS

PAINEMANWARING
Heating • Plumbing • Electrical
Unit D, Easting Trading Estate
Dominion Way, Worthing
West Sussex BN14 8HQ
Tel: (01903) 237522
Fax: (01903) 236511
Email: enquiries@painemanwaring.co.uk
Web: www.painemanwaring.co.uk

STATUS: RECORD DRAWING
CLIENT: W. STIRLAND

PROJECT: BLOCK B SOUTHERN GATE
SOUTHERN SIDINGS CHICHESTER

TITLE: ELECTRICAL SERVICES
EXTERNAL CAR PARK LIGHTING

SCALE	DESIGNED
1:200@A1	BWL
CONTRACT NUMBER	DRAWN
EC4495	BWL
DATE	CHECKED
NOV 2017	AP
DRAWING NUMBER	REVISION
EC4105-E501	RD