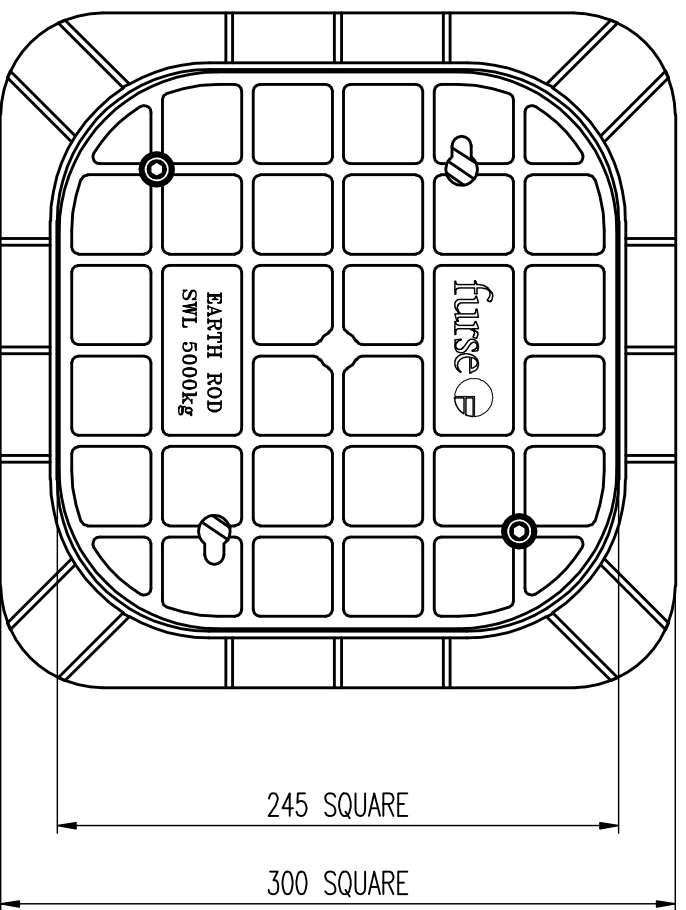
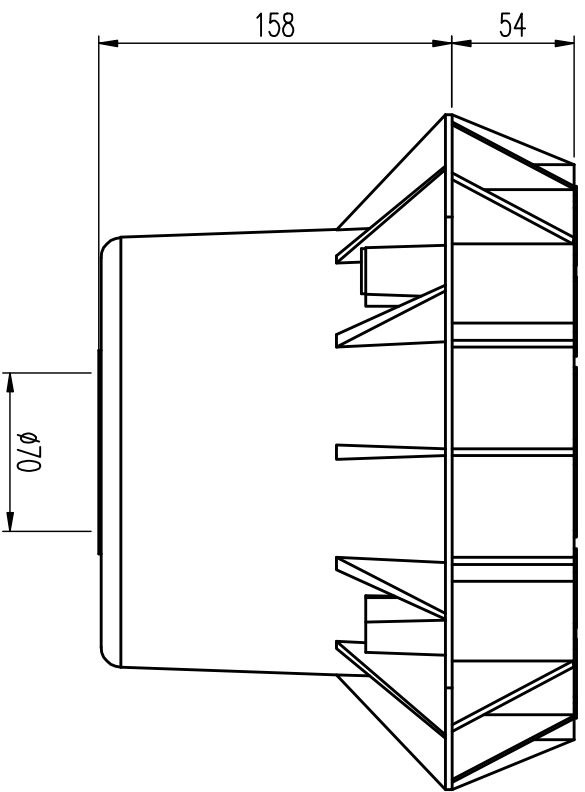
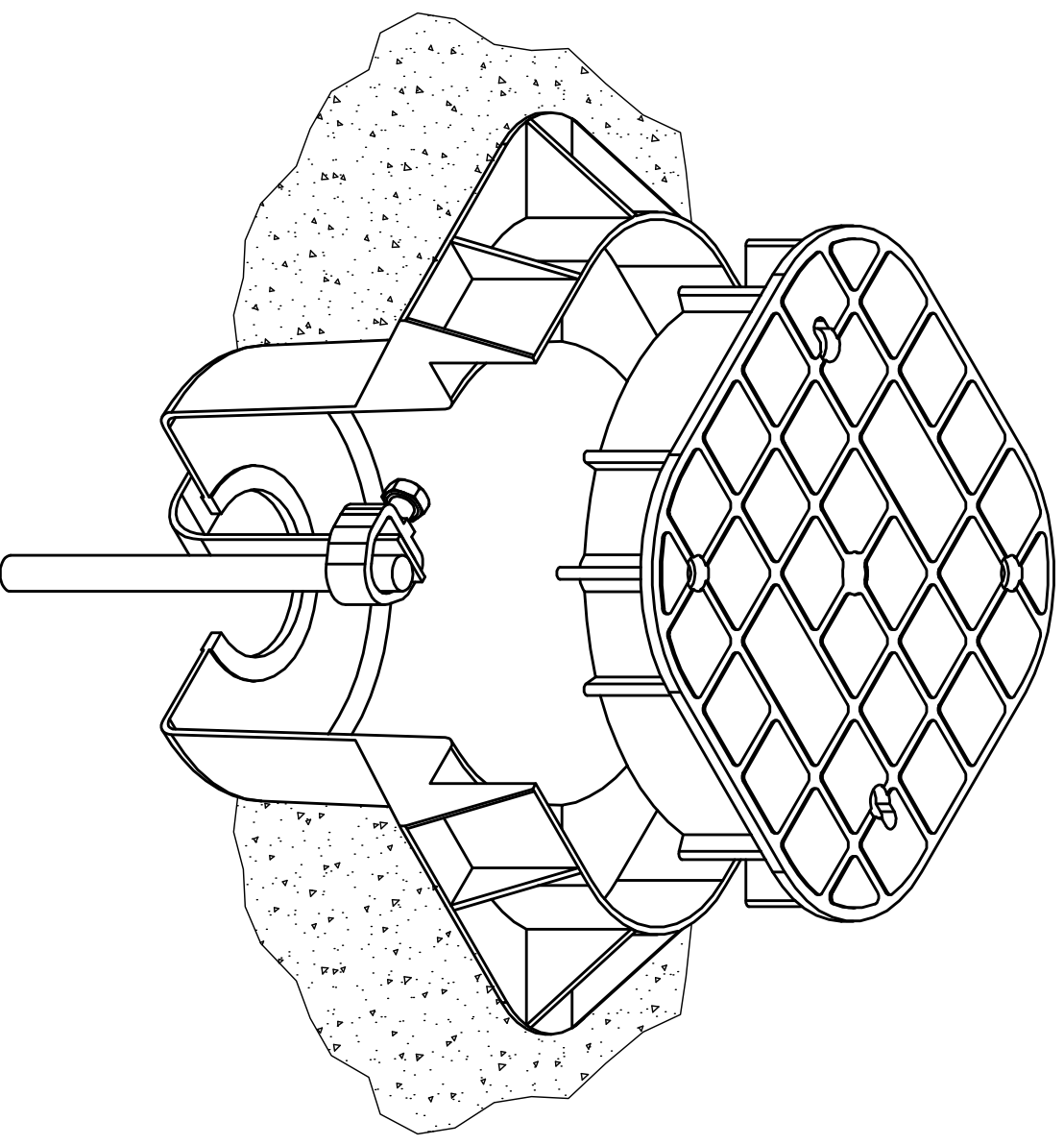


©
COPY RIGHT
RESERVED



HIGH LOAD-BEARING CAPACITY
METICULOUS DESIGN AND EXTENSIVE TESTING HAS
RESULTED IN THE SAFE WORKING LOAD OF 5000 KGS.
PATENT No. 9123547



**CUSTOMER
DRAWING**

ISSUE	DATE	REVISION	C\NOTE	DRN	APP
1	26.01.99	NEW DRAWING (AUTOCAD R14)		J.B.	JLB

SIZE: **A3**

GENERAL NOTES:
1. All dimensions in mm unless stated otherwise.
FURSE RESERVE THE RIGHT TO ALTER
THE DESIGN OF ANY PRODUCT WITHOUT NOTICE.

furse
Wilford Road,
Nottingham,
NG2 1EB
Great Britain

Tel: 0115 964 3700
Fax: 0115 986 0538.

Thomas & Betts

MATERIAL:	GLASS RE-ENFORCED POLYMER	TITLE:	NAMED EARTH PIT		DATE:	26.01.99	DRN:	J.B.
FINISH:	LID - GREY BODY - BLACK	CAD REF:	\cad\elp\customer\fixtures\p		SCALE:	1:2	CHKD:	JLB
GENERAL TOLERANCES	DIMENSIONS OF 40 OR GREATER ± 2% DIMENSIONS OF LESS THAN 40 ± 0.5	DRG.No:	PT205-C		SHEET:	1 OF 1	APP:	JLB
					PROU:		REV:	1

THIS DRAWING IS THE PROPERTY OF THOMAS & BETTS, AND MAY NOT BE USED FOR ANY PURPOSE OTHER THAN FOR WHICH IT IS SUPPLIED.

SHEET REF QADCS/A3 REV 3.