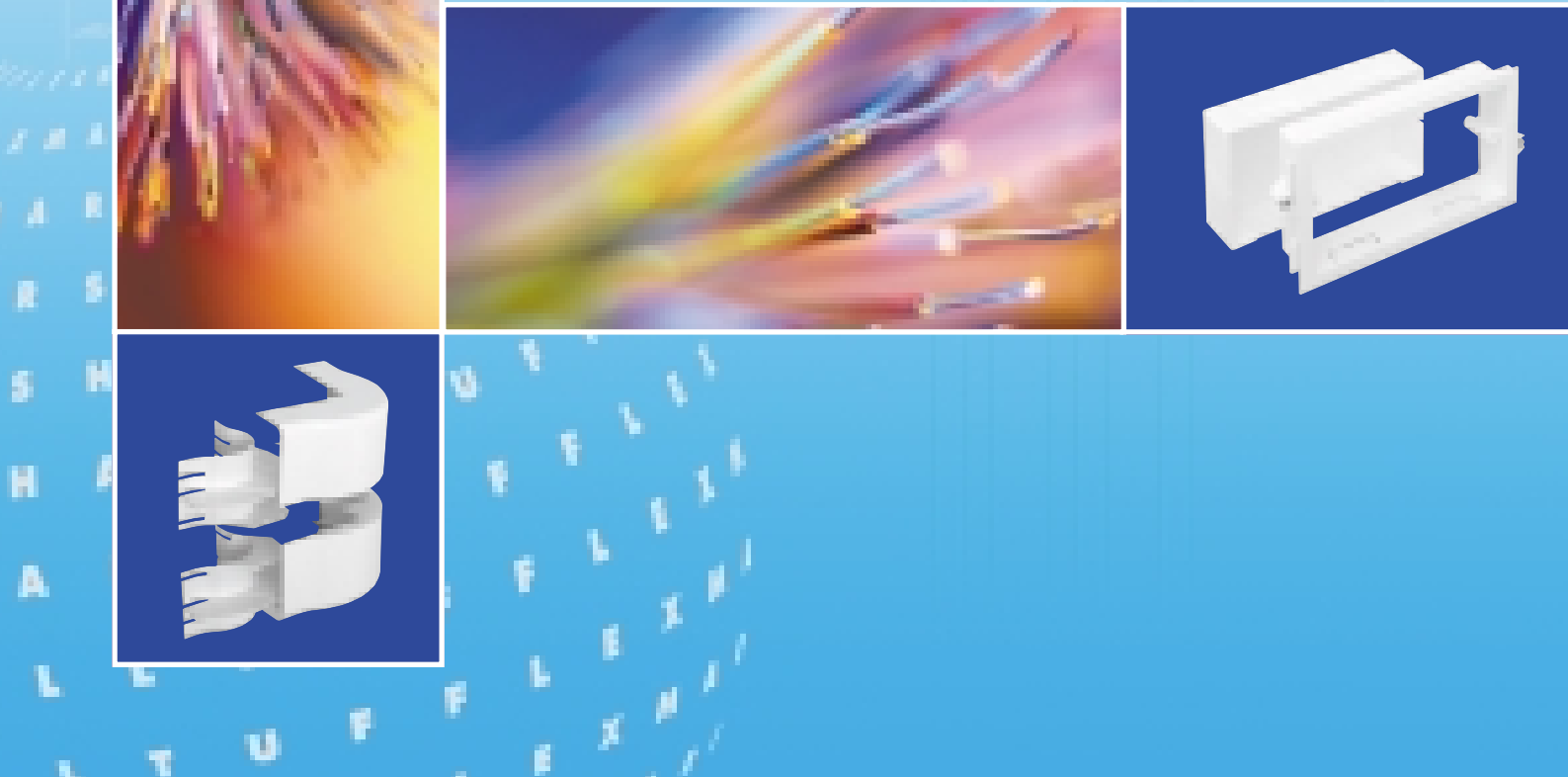
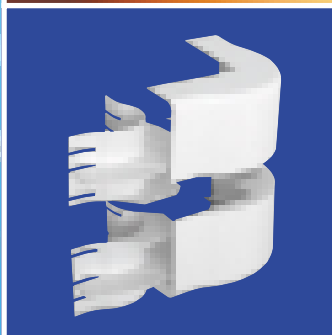
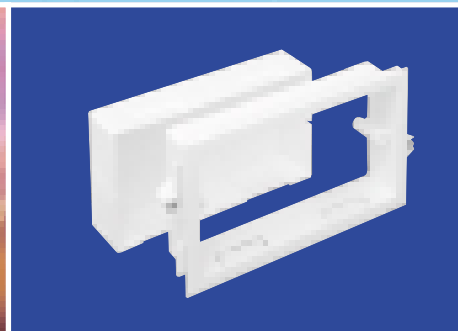
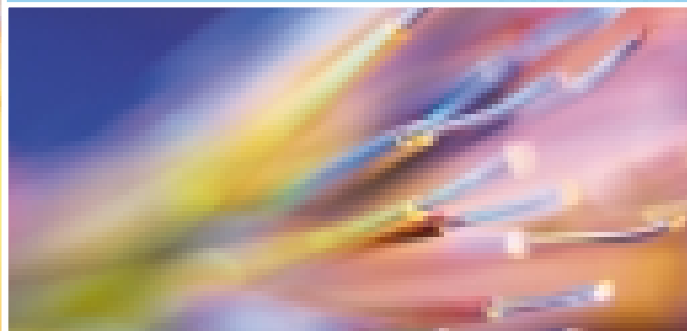
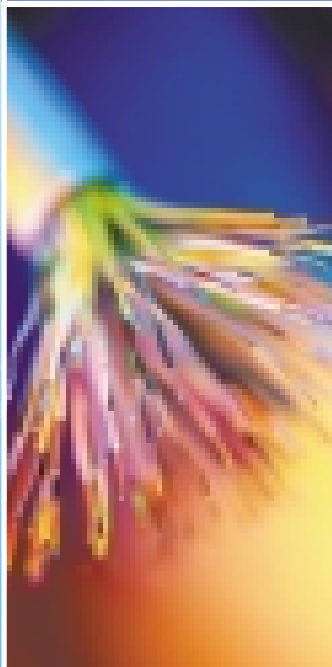
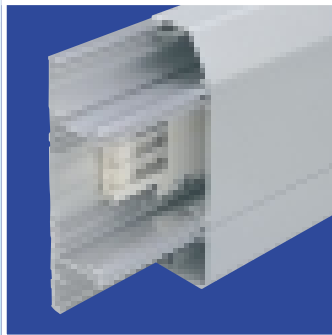
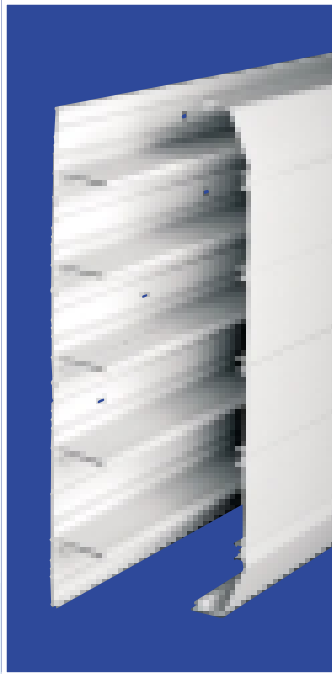


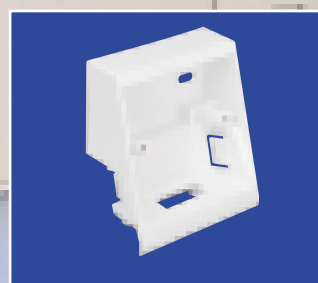
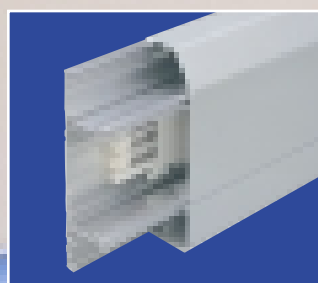
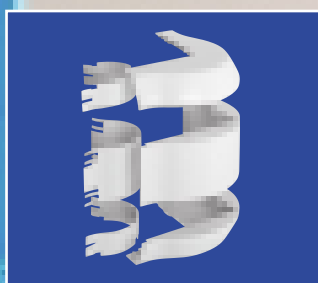
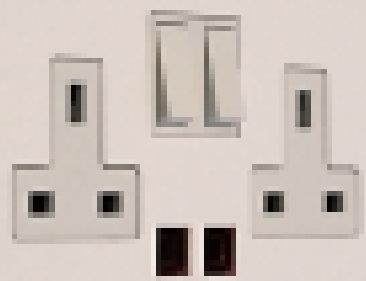


Quality  
Cable  
Management



## Sterling Trunking Systems





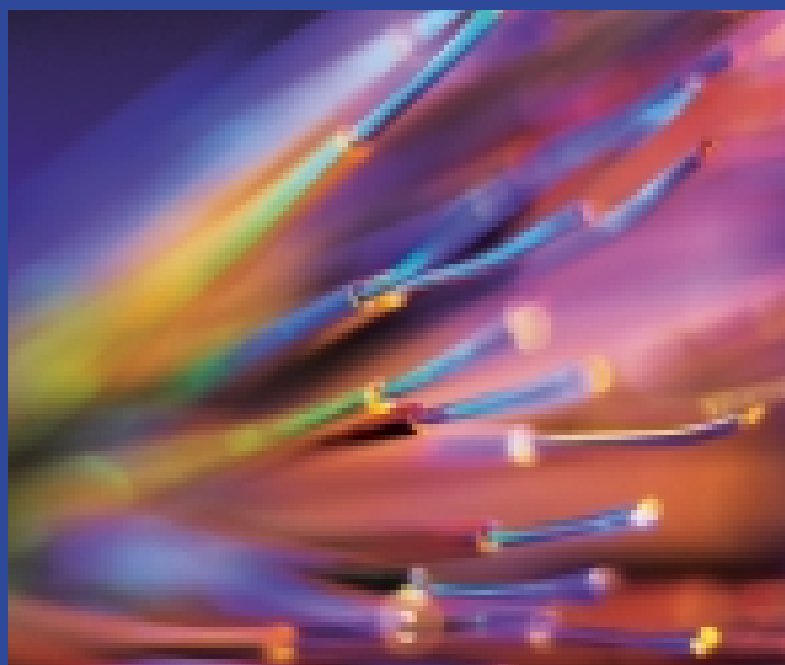
## STERLING TRUNKING SYSTEMS

Sterling Mono 10	3
Sterling Mono 20	4
Sterling Mono 30	5
Sterling Compact	6-7
Sterling Trunking	8-11
Sterling XL	12-13
Sterling Aluminium	14-15
Sterling Twin Plus	16-17
Sterling Busbar	18-19
Sterling Bench Trunking	20-21
Sterling Powerpoles & Posts	22-24
Sterling Lighting Kits	25
Sterling Wired Accessories	26
Sterling Accessory Boxes	27
Additional Sterling Components	28-30
Material Data	31
Technical Information	32-34
Specialised Applications	35



### NEW DATA TWIN PLUS

See pages 16-17



X M A  
I A  
R  
S  
H  
A  
L

L L U F F L L  
L T U F F L E X N  
T U F F L E X N

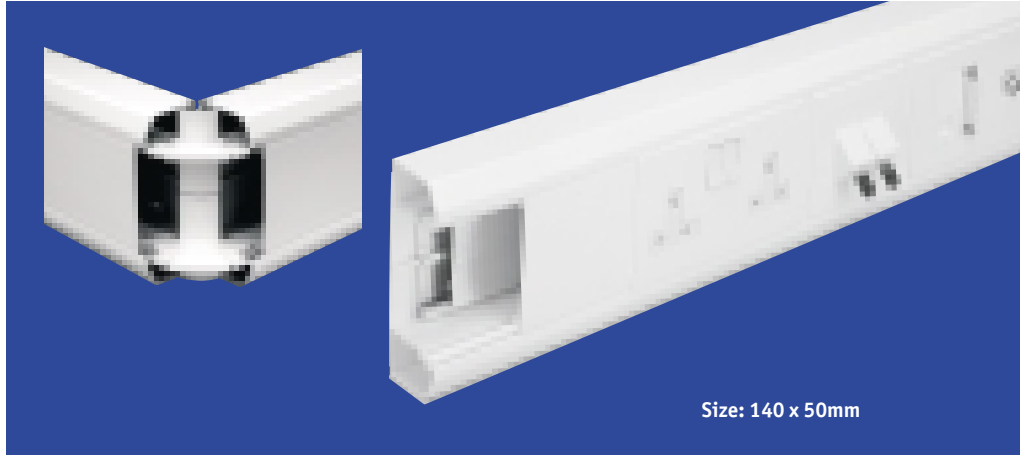




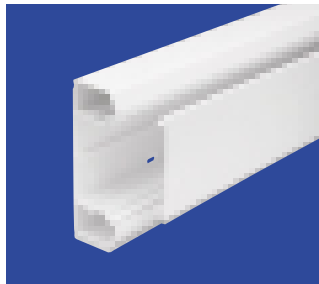
# STERLING MONO 20

With three compartments and a single lid, Mono 20 represents a new concept for Sterling PVC-U trunking offering a high capacity from compact dimensions of 140 x 50mm. The External Bend features two patented internal segregators which offers a minimum bend radius of 25mm to control cables for optimum performance. The Internal Bend has a chamfered face to assist with cable control on the inside of a bend. Both are pre-requisites when installing high performance data cables within trunking.

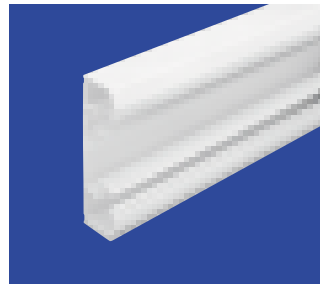
- One piece fittings.
- Dividing fillet option for centre compartment.
- Fully compatible with Sterling flush accessories.
- Secure external bend.



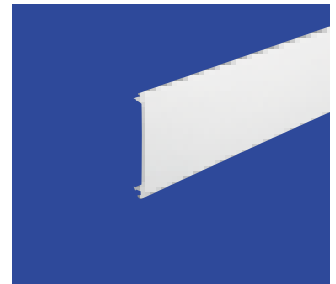
Size: 140 x 50mm



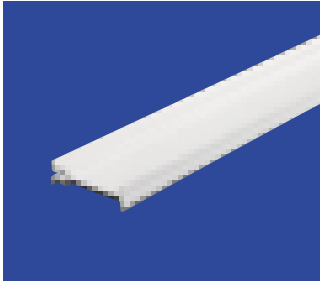
**Sterling Mono 20**  
Size: 140 x 50mm



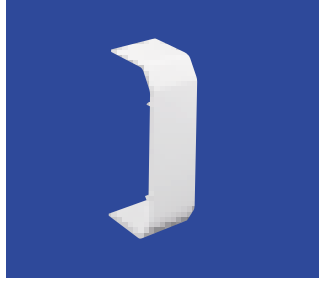
**Trunking (Base and 2 Dividing Segregators)**  
Prod Code EMT20WH Pack 4 x 3m



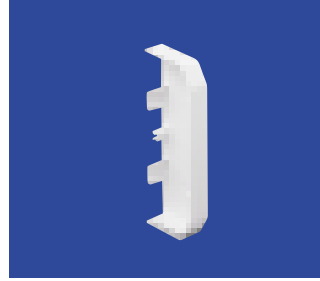
**Main Compartment Lid**  
Prod Code ETL1WH Pack 8 x 3m



**Dividing Fillet**  
Prod Code EDF1WH Pack 8 x 3m



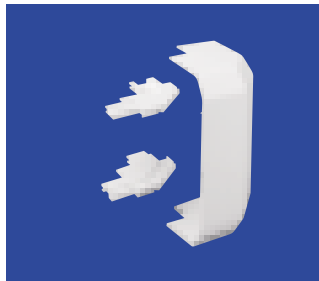
**Coupler**  
Prod Code EC20WH Pack 5



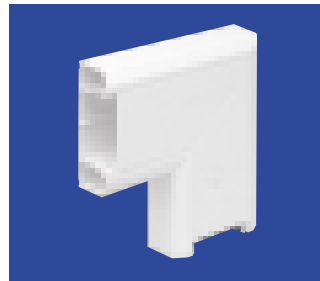
**End Cap**  
Prod Code EEC20WH Pack 5



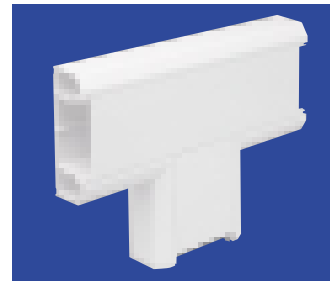
**Internal Bend**  
Prod Code EIB20WH Pack 5



**External Bend**  
Prod Code EXB20WH Pack 5



**Flat Angle – Fabricated**  
Prod Code EFA20WH Pack 1



**Flat Tee – Fabricated**  
Prod Code EFT20WH Pack 1

**ASSISTS IN MEETING THE MINIMUM BEND RADIUS REQUIREMENTS OF CAT 5e & CAT 6**

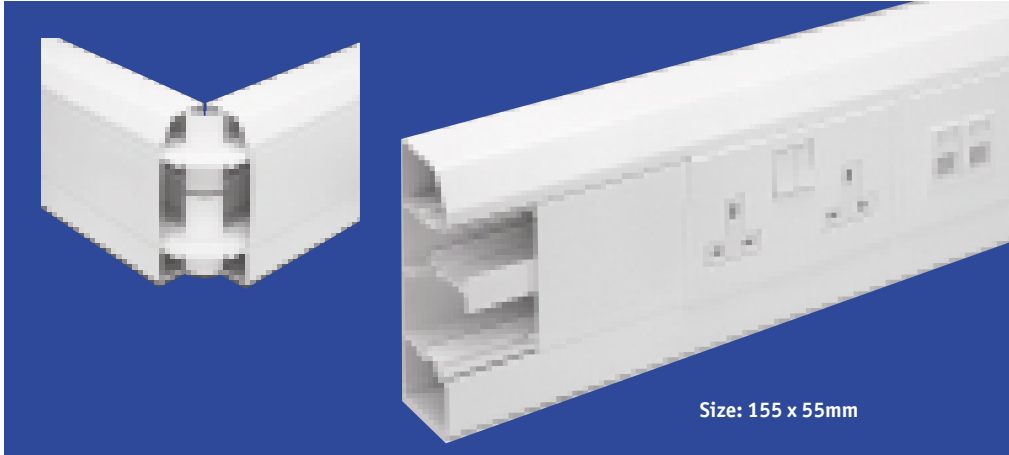
**FOR ADDITIONAL ACCESSORIES AND BOXES SEE PAGES 26 TO 30 FOR BUSBAR FITTINGS SEE PAGES 18 TO 19**

# STERLING MONO 30

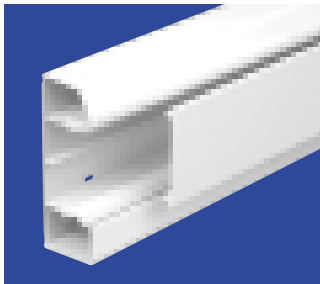


Sterling Mono 30 is a three compartment trunking with a single lid utilising the same two unique segregation fillets from the Mono 20 range. The External Bend features two patented internal segregators which offers a minimum bend radius of 25mm to control cables for optimum performance. The Internal Bend has a chamfered face to assist with cable control on the inside of a bend. Both are pre-requisites when installing high performance data cables within trunking.

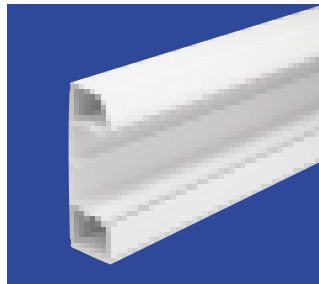
- One piece fittings.
- Dividing fillet option for centre compartment.
- Fully compatible with Sterling Flush Accessories.
- Range of Sterling colours.



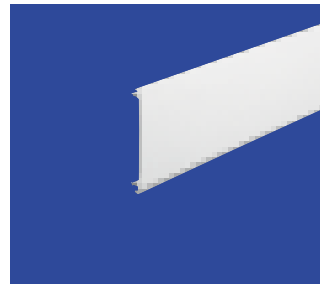
Size: 155 x 55mm



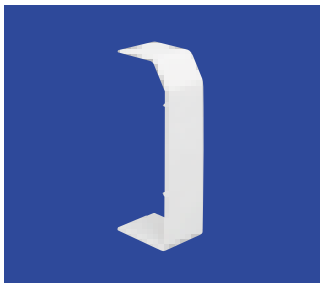
**Sterling Mono 30**  
Size: 155 x 55mm



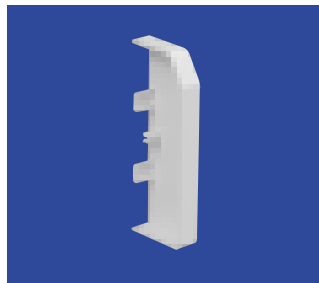
**Trunking (Base and 2 Dividing Segregators)**  
Prod Code Pack  
EMT30WH 4 x 3m



**Main Compartment Lid**  
Prod Code Pack  
ETL1WH 8 x 3m



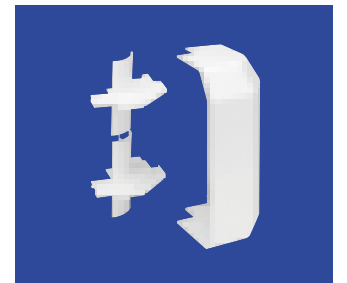
**Coupler**  
Prod Code Pack  
EC30WH 5



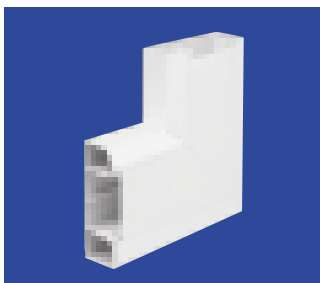
**End Cap**  
Prod Code Pack  
EEC30LWH (Left hand) 5  
EEC30RWH (Right hand) 5



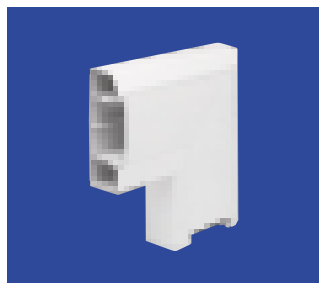
**Internal Bend**  
Prod Code Pack  
ETB30WH 5



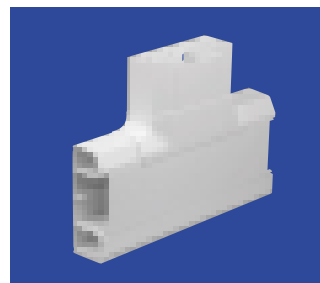
**External Bend**  
Prod Code Pack  
EXB30WH 5



**Flat Angle – Fabricated**  
Prod Code Pack  
EFA30UWH 1



**Flat Angle – Fabricated**  
Prod Code Pack  
EFA30DWH 1



**Flat Tee – Fabricated**  
Prod Code Pack  
EFT30ULWH 1



**Flat Tee – Fabricated**  
Prod Code Pack  
EFT30DLWH 1

Colour Code Suffix		
For alternative colours, please replace the last two letters with those detailed below.		
Code	Colour	System
WH	White	PVC-U
LG	Light Grey	PVC-U
BG	Beige	PVC-U
BN	Brown	PVC-U
CH	Charcoal	PVC-U

**ASSISTS IN MEETING THE MINIMUM BEND RADIUS REQUIREMENTS OF CAT 5e & CAT 6**





# STERLING COMPACT continued

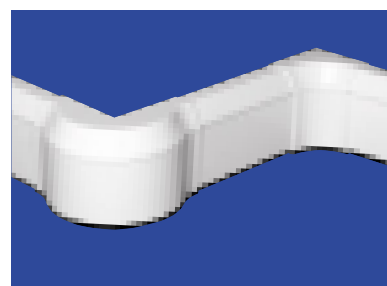
## STERLING COMPACT COMPONENT CHART

		Compact			
		Compact 1 130 x 50mm	Compact 2 130 x 50mm	Compact 3 181 x 50mm	Busbar Assembly
<b>Base Unit</b>		ETB2WH	ETB2WH	ETB2WH	GRA1WH
Pack 4 x 3m					
<b>Base Extension</b>		—	—	EBE1WH	—
Pack 8 x 3m					
<b>Main Compartment Lid</b>		ETL1WH	ETL1WH	2 x ETL1WH	—
Pack 8 x 3m					
<b>Angled Cover</b>		ETAC1WH	—	—	—
Pack 8 x 3m					
<b>Square Cover</b>		—	ETSC1WH	—	—
Pack 8 x 3m					
<b>Couplers</b>		ECC1WH	ECC2WH	ECC3WH	GTB1CL
Pack 5					
<b>End Caps</b>		EECC1LHWH EECC1RHWH	EECC2LHWH EECC2RHWH	EECC3LHWH EECC3RHWH	GTC1WH
Pack 5 Left or right hand					
<b>Standard Internal Bends</b>		EIBC1WH	EIBC2WH	EIBC3WH	GCA1CL
Pack 5					
<b>Standard External Bends</b>		EXBC1WH	EXBC1WH	EXBC1WH	GCA1CL
Pack 5					
<b>Flat Angles</b>		EFAC1UWH EFAC1DWH	EFAC2UWH EFAC2DWH	EFAC3WH	GCA1CL
Pack 1					
<b>Flat Tees</b>		EFTC1ULWH EFTC1URWH EFTC1DLWH EFTC1DRWH	EFTC2ULWH EFTC2URWH EFTC2DLWH EFTC2DRWH	EFTC3WH	GCA1CL
Pack 1					
<b>NEW! Data Internal Bend Covers Only</b>		EIBCD1WH	EIBCD2WH	EIBCD3WH	GCA1CL
Pack 1					
<b>NEW! Data Internal Bend Assemblies</b>		ELIBCD1WH	ELIBCD2WH	ELIBCD3WH	GCA1CL
Pack 1					
<b>NEW! Data External Bend Covers Only</b>		EXBCD1WH	EXBCD2WH	EXBCD3WH	GCA1CL
Pack 1					
<b>NEW! Data External Bend Assemblies</b>		ELOBCD1WH	ELOBCD1WH	ELOBCD1WH	GCA1CL
Pack 1					

## NEW! STERLING COMPACT DATA FITTINGS

Sterling Compact Data Fittings are ideal for enabling the transportation of data, communication and power. The range of fittings that include moulded internal and external bends, which feature a large bend radius for optimum performance of cable control. Using Sterling Compact Data Fittings enables you to enjoy a range that has all the benefits of being totally integrated with the MT Sterling range.

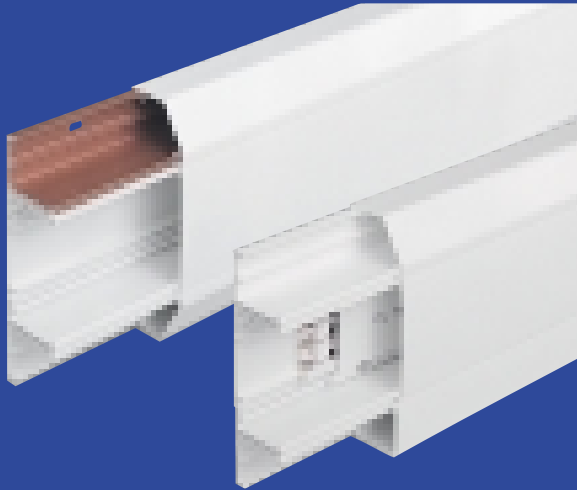
- Large bend radius of 50mm.
- Cable control performance that exceeds the requirements of the TIA/EIA, ISO/IEC and CEN/CENELEC standards for Category 5e/class D, Category 6/ClassE, Category 7/ClassF and Coax cables.
- Can be retro-fitted to existing installations.
- Designed to be compatible with the new adjustable box that has a maximum depth of 40mm.
- Tamper resistant clip action to hold fittings securely.



Colour Code Suffix		
For alternative colours, please replace the last two letters with those detailed below.		
Code	Colour	System
WH	White	PVC-U
LG	Light Grey	PVC-U
BG	Beige	PVC-U
BN	Brown	PVC-U
CH	Charcoal	PVC-U

For further information contact **Technical Hotline +44 (0) 1424 443348** for advice.

**FOR ADDITIONAL ACCESSORIES AND BOXES SEE PAGES 26 TO 30 FOR BUSBAR FITTINGS SEE PAGES 18 TO 19**



## STERLING TRUNKING

Sterling. A multi-compartment PVC-U cable management system from Marshall-Tufflex specifically designed for the modern office environment. Developed in response to the demands of architects, consulting engineers and designers, Sterling is a modular system ideal for the transportation of data, communication and power.

- Suitable for a wide range of applications in offices, laboratories, hospitals and workshops.
- Skirting or dado level mounting.
- Ideal for new buildings and refurbishments.
- Available in a large number of profile configurations, colours and finishes.
- Complete with a full range of corners, flat angles, bends, tees and additional components.
- Designed to complement the latest ranges of switches and sockets.
- Able to accommodate future wiring alterations and additions.
- Fully compatible with the Sterling Busbar System. Further segregation of services within each compartment may be achieved using dividing fillets. Sterling is backed up by a worldwide distribution and representation network, pre-sales assistance and advice with first class technical support.



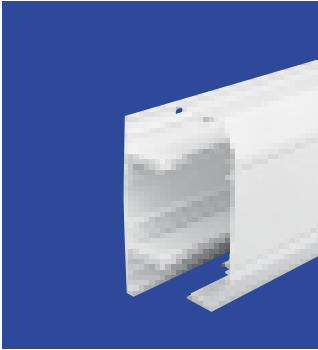
# STERLING TRUNKING



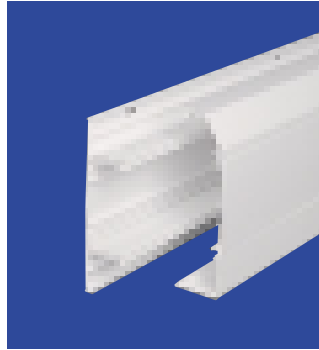
**NEW!** **STERLING DATA FITTINGS**

Sterling Data is ideal for enabling the transportation of data, communication and power. The range of moulded fittings include internal and external bends which feature a large bend radius for optimum performance of cable control. Using Sterling Data Fittings enables you to enjoy a range that has all the benefits of being totally integrated with the MT Sterling range and includes the option of retro-fitting to existing Sterling installations.

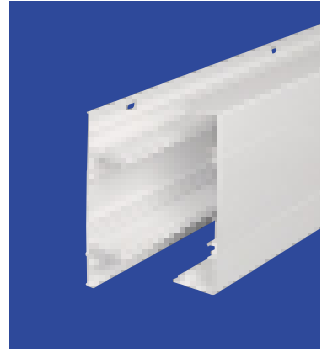
- Large bend radius of 50mm.
- Cable control performance that exceeds the requirements of the TIA/EIA, ISO/IEC and CEN/CENELEC standards for Category 5e/class D, Category 6/ClassE, Category 7/ClassF and Coax cables.
- Designed to be compatible with the new adjustable box that has a maximum depth of 40mm.
- Tamper resistant clip action to hold fittings securely.



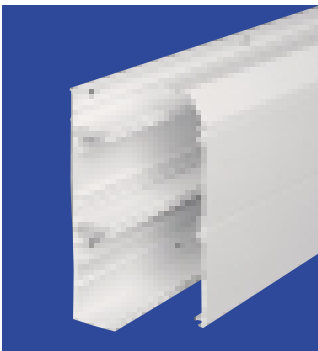
**Profile 1**  
Size: 167 x 50mm



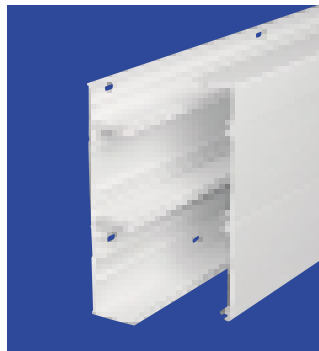
**Profile 2**  
Size: 167 x 50mm



**Profile 3**  
Size: 167 x 50mm



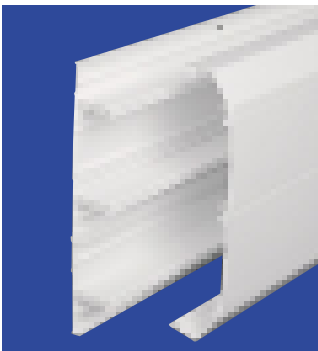
**Profile 4**  
Size: 218 x 50mm



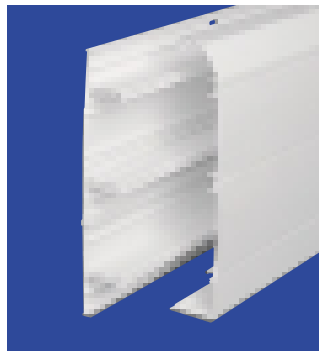
**Profile 5**  
Size: 218 x 50mm



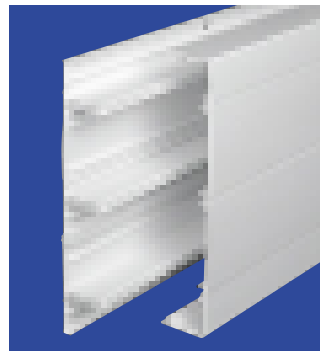
**Profile 6**  
Size: 269 x 50mm



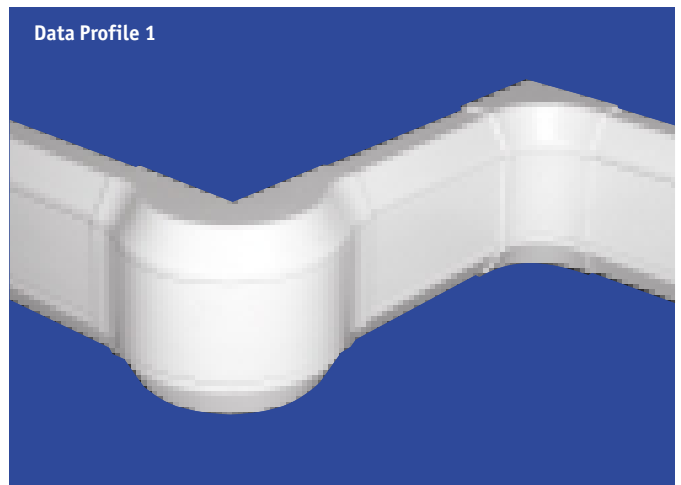
**Profile 11**  
Size: 255 x 50mm



**Profile 12**  
Size: 255 x 50mm



**Profile 13**  
Size: 255 x 50mm



**FOR ADDITIONAL ACCESSORIES AND BOXES  
SEE PAGES 26 TO 30**

**FOR BUSBAR FITTINGS SEE  
PAGES 18 TO 19**



# STERLING TRUNKING continued

## STERLING COMPONENT CHART

		3 Compartment					
		Profile 1 167 x 50mm	Profile 2 167 x 50mm	Profile 3 167 x 50mm	Profile 4 218 x 50mm	Profile 5 218 x 50mm	Profile 6 269 x 50mm
<b>Base Unit</b>		ETB1WH	ETB1WH	ETB1WH	ETB1WH	ETB1WH	ETB1WH
Pack 4 x 3m							
<b>Base Extension</b>		—	—	—	EBE1WH	EBE1WH	2 x EBE1WH
Pack 8 x 3m							
<b>Extendable Base</b>		—	—	—	—	—	—
Pack 4 x 3m							
<b>Main Compartment Lid</b>		ETL1WH	ETL1WH	ETL1WH	2 x ETL1WH	2 x ETL1WH	3 x ETL1WH
Pack 8 x 3m							
<b>Angled Cover</b>		2 x ETAC1WH	ETAC1WH	—	ETAC1WH	—	—
Pack 8 x 3m							
<b>Square Cover</b>		—	ETSC1WH	2 x ETSC1WH	—	ETSC1WH	—
Pack 8 x 3m							
<b>Couplers</b>		ECP1WH	ECP2WH	ECP3WH	ECP4WH	ECP5WH	ECP6WH
Pack 5							
<b>End Caps</b>		EECP1WH	EECP2LHWH EECP2RHWH	EECP3WH	EECP4LHWH EECP4RHWH	EECP5LHWH EECP5RHWH	EECP6WH
Pack 5 Left or right hand							
<b>Standard Internal Bends</b>		EIBP1WH	EIBP2WH	EIBP3WH	EIBP4WH	EIBP5WH	EIBP6WH
Pack 5							
<b>Standard External Bends</b>		EXBP1WH	EXBP2WH	EXBP3WH	EXBP4WH	EXBP5WH	EXBP6WH
Pack 5							
<b>Flat Angles</b>		EFA1WH	EFA2UWH EFA2DWH	EFA3WH	EFA4UWH EFA4DWH	EFA5UWH EFA5DWH	EFA6WH
Pack 1							
<b>Flat Tees</b>		EFT1WH	†	EFT3WH	†	†	EFT6WH
Pack 1							
<b>NEW! Data Internal Bend Covers Only</b>		EIBD1WH	EIBD2WH	EIBD3WH	EIBD4WH	EIBD5WH	EIBD6WH
Pack 5							
<b>NEW! Data Internal Bend Assemblies</b>		ELIBD1WH	ELIBD2WH	ELIBD3WH	ELIBD4WH	ELIBD5WH	ELIBD6WH
Pack 5							
<b>NEW! Data External Bend Covers Only</b>		EXBD1WH	EXBD2WH	EXBD3WH	EXBD4WH	EXBD5WH	EXBD6WH
Pack 5							
<b>NEW! Data External Bend Assemblies</b>		ELOBD1WH	ELOBD2WH	ELOBD3WH	ELOBD4WH	ELOBD5WH	ELOBD6WH
Pack 5							



4 Compartment						Busbar Assembly
Profile 11 255 x 50mm	Profile 12 255 x 50mm	Profile 13 255 x 50mm	Profile 14 306 x 50mm	Profile 15 306 x 50mm	Profile 16 357 x 50mm	
ETB1WH	ETB1WH	ETB1WH	ETB1WH	ETB1WH	ETB1WH	GRA1WH
—	—	—	EBE1WH	EBE1WH	2 x EBE1WH	—
EEB1WH	EEB1WH	EEB1WH	EEB1WH	EEB1WH	EEB1WH	—
2 x ETL1WH	2 x ETL1WH	2 x ETL1WH	3 x ETL1WH	3 x ETL1WH	4 x ETL1WH	—
2 x ETAC1WH	ETAC1WH	—	ETAC1WH	—	—	—
—	ETSC1WH	2 x ETSC1WH	—	ETSC1WH	—	—
ECP1WH+ ELC1WH	ECP2WH+ ELC1WH	ECP3WH+ ELC1WH	ECP4WH+ ELC1WH	ECP5WH+ ELC1WH	ECP6WH+ ELC1WH	GTB1CL
EECP1WH+ ELEC3WH	EECP2LHWH+ EECP2RHWH+ ELEC3WH	EECP3WH+ ELEC3WH	EECP4LHWH+ EECP4RHWH+ ELEC3WH	EECP5LHWH+ EECP5RHWH+ ELEC3WH	EECP6WH+ ELEC3WH	GTC1WH
EIBP1WH+ ELIB1WH	EIBP2WH+ ELIB1WH	EIBP3WH+ ELIB1WH	EIBP4WH+ ELIB1WH	EIBP5WH+ ELIB1WH	EIBP6WH+ ELIB1WH	GCA1CL
EXBP1WH+ ELOB1WH	EXBP2WH+ ELOB1WH	EXBP3WH+ ELOB1WH	EXBP4WH+ ELOB1WH	EXBP5WH+ ELOB1WH	EXBP6WH+ ELOB1WH	GCA1CL
EFA11WH	EFA12UWH EFA12DWH	EFA13WH	EFA14UWH EFA14DWH	EFA15UWH EFA15DWH	EFA16WH	GCA1CL
EFT11WH	†	EFT13WH	†	†	EFT16WH	GCA1CL
EIBD1WH+ EIBD10WH	EIBD2WH+ EIBD10WH	EIBD3WH+ EIBD10WH	EIBD4WH+ EIBD10WH	EIBPD5WH+ EIBD10WH	EIBD6WH+ EIBD10WH	GCA1CL
ELIBD1WH+ ELIBD10WH	ELIBD2WH+ ELIBD10WH	ELIBD3WH+ ELIBD10WH	ELIBD4WH+ ELIBD10WH	ELIBPD5WH+ ELIBD10WH	ELIBD6WH+ ELIBD10WH	GCA1CL
EXBD1WH+ EXBD10WH	EXBD2WH+ EXBD10WH	EXBD3WH+ EXBD10WH	EXBD4WH+ EXBD10WH	EXBPD5WH+ EXBD10WH	EXBD6WH+ EXBD10WH	GCA1CL
ELOBD1WH+ ELOBD10WH	ELOBD2WH+ ELOBD10WH	EXBD3WH+ EXBD10WH	EXBD4WH+ EXBD10WH	EXBPD5WH+ EXBD10WH	EXBD6WH+ EXBD10WH	GCA1CL

**NEW!** **STERLING DATA FITTINGS**

Sterling Data is ideal for enabling the transportation of data, communication and power. The range of moulded fittings include internal and external bends which feature a large bend radius for optimum performance of cable control. Using Sterling Data Fittings enables you to enjoy a range that has all the benefits of being totally integrated with the MT Sterling range and includes the option of retro-fitting to existing Sterling installations.

- Large bend radius of 50mm.
- Cable control performance that exceeds the requirements of the TIA/EIA, ISO/IEC and CEN/CENELEC standards for Category 5e/class D, Category 6/ClassE, Category 7/ClassF and Coax cables.
- Designed to be compatible with the new adjustable box that has a maximum depth of 40mm.
- Tamper resistant clip action to hold fittings securely.

Colour Code Suffix		
For alternative colours, please replace the last two letters with those detailed below.		
Code	Colour	System
WH	White	PVC-U
LG	Light Grey	PVC-U
BG	Beige	PVC-U
BN	Brown	PVC-U
CH	Charcoal	PVC-U

† Contact **Technical Hotline** +44 (0) 1424 443348 for advice.

**FOR ADDITIONAL ACCESSORIES AND BOXES SEE PAGES 26 TO 30**

**FOR BUSBAR FITTINGS SEE PAGES 18 TO 19**



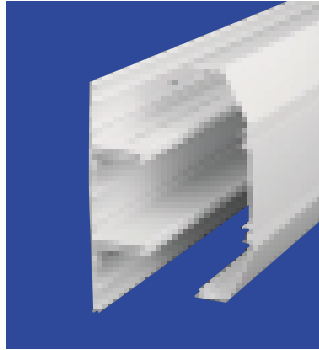
# STERLING XL

Sterling XL is a large capacity, PVC-U cable management system from Marshall-Tufflex. Originally conceived for use in the modern office, it is equally suitable for use in a wide range of locations such as hospitals, laboratories or workshops and is ideal for both new-build projects and refurbishments.

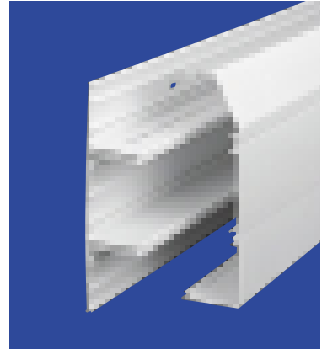
In developing Sterling XL we worked very closely with architects, consulting engineers and designers to give the system all the style and adaptability that is the hallmark of our existing Sterling range, together with the practical benefits of a large, multi-compartment trunking system:

- 220mm in height and 65mm in depth.
- Additional compartments of 88mm in height may be added for larger capacity installations.
- Self aligning couplers.
- Clip-on end cap features internal flanges for optional screw fixing to give optimum security and safety.
- External bends feature internal segregators which offer greater retention and alignment of fitting.
- Individual compartment lids for safety and ease of access.
- May be installed at dado or skirting level according to preference.

The system has been designed to be as adaptable as we could possibly make it: there is a 63Amp Busbar option for each main compartment with an internal Busbar cover that extends throughout for greater safety.



**Profile 201**  
Size: 220 x 65mm



**Profile 202**  
Size: 220 x 65mm



**Profile 203**  
Size: 220 x 65mm



**Profile 211**  
Size: 308 x 65mm



**Profile 212**  
Size: 308 x 65mm



**Profile 213**  
Size: 308 x 65mm

Larger systems are also available with other lid configurations, contact Technical Hotline +44 (0) 1424 443348 for advice.



Size: 484 x 65mm



## STERLING XL COMPONENT CHART

		3 Compartment			4 Compartment			Busbar Assembly
		Profile 201 220 x 65mm	Profile 202 220 x 65mm	Profile 203 220 x 65mm	Profile 211 308 x 65mm	Profile 212 308 x 65mm	Profile 213 308 x 65mm	
<b>Base Unit</b> Pack 4 x 3m		ELTB200WH	ELTB200WH	ELTB200WH	ELTB200WH	ELTB200WH	ELTB200WH	GRA1WH + ELBS200WH
<b>Extendable Base</b> Pack 4 x 3m		—	—	—	ELEB200WH	ELEB200WH	ELEB200WH	GRA1WH + ELBS200WH
<b>Main Compartment Lid</b> Pack 8 x 3m		ETL1WH	ETL1WH	ETL1WH	2 x ETL1WH	2 x ETL1WH	2 x ETL1WH	—
<b>Angled Cover</b> Pack 8 x 3m		2 x ELAC200WH	ELAC200WH	—	2 x ELAC200WH	ELAC200WH	—	—
<b>Square Cover</b> Pack 8 x 3m		—	ELSC200WH	2 x ELSC200WH	—	ELSC200WH	2 x ELSC200WH	—
<b>Couplers</b> Pack 5		EC201WH	EC202WH	EC203WH	EC201WH + ELLCC200WH	EC202WH + ELLCC200WH	EC203WH + ELLCC200WH	GTB1WH
<b>End Caps</b> Pack 5 Left or right hand		EEC201LHWH EEC201RHWH	EEC202LHWH EEC202RHWH	EEC203LHWH EEC203RHWH	EEC201LHWH + ELLEC200WH EEC201RHWH + ELLEC200WH	EEC202LHWH + ELLEC200WH EEC202RHWH + ELLEC200WH	EEC203LHWH + ELLEC200WH EEC203RHWH + ELLEC200WH	GTC1WH
<b>Internal Bends</b> Pack 5		EIB201WH	EIB202WH	EIB203WH	EIB201WH + ELLIB200WH	EIB202WH + ELLIB200WH	EIB203WH + ELLIB200WH	GCA1WH
<b>External Bends</b> Pack 5		EXB201WH	EXB202WH	EXB203WH	EXB201WH + ESLEB200WH	EXB202WH + ESLEB200WH	EXB203WH + ESLEB200WH	GCA1WH
<b>Flat Angles</b> Pack 1		EFA201WH	EFA202UWH EFA202DWH	EFA203WH	EFA211WH	EFA212UWH EFA212DWH	EFA213WH	GCA1WH
<b>Flat Tees</b> Pack 1		EFT201WH	†	EFT203WH	EFT211WH	†	EFT213WH	GCA1WH

† Contact **Technical Hotline**  
+44 (0) 1424 443348 for advice.

Colour Code Suffix		
For alternative colours, please replace the last two letters with those detailed below.		
Code	Colour	System
WH	White	PVC-U
LG	Light Grey	PVC-U
BG	Beige	PVC-U
BN	Brown	PVC-U
CH	Charcoal	PVC-U

**FOR ADDITIONAL ACCESSORIES AND BOXES  
SEE PAGES 26 TO 30  
FOR BUSBAR FITTINGS SEE  
PAGES 18 TO 19**





# STERLING ALUMINIUM continued

## STERLING ALUMINIUM COMPONENT CHART

		3 Compartment			
		Profile 3001 167 x 50mm	Profile 3002 167 x 50mm	Profile 3003 167 x 50mm	Busbar Assembly
<b>Base Unit</b>		ETB300SG	ETB300SG	ETB300SG	GRA1WH
Pack 4 x 3m					
<b>Main Compartment Lid</b>		LTL1SG	LTL1SG	LTL1SG	—
Pack 8 x 3m					
<b>Angled Cover</b>		2 x ETAC300SG	ETAC300SG	—	—
Pack 8 x 3m					
<b>Square Cover</b>		—	ETSC300SG	2 x ETSC300SG	—
Pack 8 x 3m					
<b>Couplers</b>		ECP401SG	ECP402SG	ECP403SG	GTB1CL
Pack 5					
<b>End Caps</b>		EECP401SG	EECP402LHSG EECP402RHSG	EECP403	GTC1CL
Pack 5 Left or right hand					
<b>Internal Bends</b>		EIBP401SG	EIBP402SG	EIBP403SG	GCA1CL
Pack 5					
<b>External Bends</b>		EXBP401SG	EXBP402SG	EXBP403SG	GCA1CL
Pack 5					
<b>Flat Angles</b>		EFAP3001SG	EFAP3002USG EFAP3002DSG	EFAP3003SG	GCA1CL
Pack 1					
<b>Flat Tees</b>		EFTP3001SG	†	EFTP3003SG	GCA1
Pack 1					
<b>Bonding Terminal Assembly</b>		LBT1	LBT1	LBT1	—
Incoming 16mm <sup>2</sup> Pack 5					
<b>Bonding Terminal Assembly</b>		LBT2*	LBT2*	LBT2*	—
Base to Base 63Amp Pack 5					
<b>Bonding Strap</b>		LBS1*	LBS1*	LBS1*	—
Base to Base 32Amp Pack 1					
<b>Bonding Strap</b>		3 x LBS2	3 x LBS2	3 x LBS2	—
Cover to Base Pack 1					

Marshall-Tufflex have worked very closely with architects, consulting engineers and designers to develop the Sterling Aluminium range, in response to the demand for aluminium trunking. Aluminium cable management is ideal for commercial, industrial and workshop use and particularly suitable for hospital and laboratory installations. Our Sterling Aluminium systems are compatible with the full range of Sterling Accessories and surface finishes include silver or white powder-coated as standard, with additional colours or foils available on request. Sterling Aluminium systems are manufactured from high precision extruded aluminium with and incorporate all the style and adaptability that are the hallmarks of our existing Sterling range, together with the practical benefits of top quality aluminium trunking systems.

Colour Code Suffix		
For alternative colours, please replace the last two letters with those detailed below.		
Code	Colour	System
SG	Silver Grey	Aluminium
WH	White	Aluminium

† Contact **Technical Hotline** +44 (0) 1424 443348 for advice.  
\* Dependant on installation.  
Covers and base are to be bonded to earth potential, refer to BS7671 (Wiring Regulations)

**FOR ADDITIONAL ACCESSORIES AND BOXES SEE PAGES 26 TO 30**

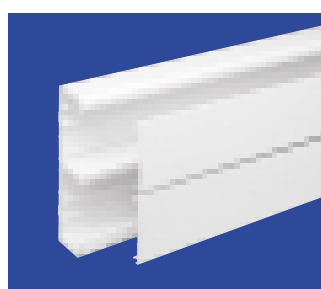


## STERLING TWIN PLUS

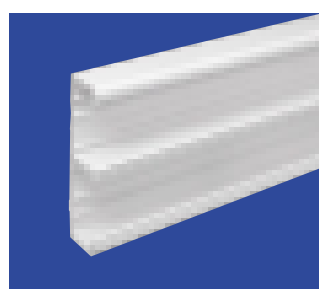
Sterling Twin Plus is a totally integrated large capacity, two-compartment, cabling solution for Copper Data Systems and Optical Fibre. It is designed with both power and high performance networks in mind.

The system has a specially designed larger radius internal and external bends, flat angles and tees that are crucial for good performance in Gigabit Ethernet and other advanced LAN technologies.

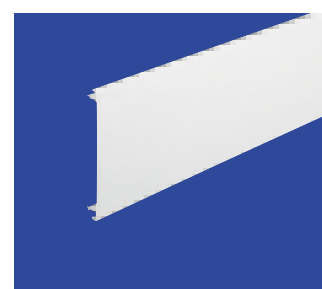
- Bends, angles and tees with a large bend radius of 50mm.
- Cable control performance exceeds the requirements of the TIA/EIA, ISO/IEC and CEN/CENELEC standards for Category 5e/class D, Category 6/ClassE, Category 7/ClassF and Coax cables
- Facility to sub-divide each compartment.
- Utilises the full range of Sterling flush accessories and boxes.
- Busbar option available.
- Designed to be compatible with the new adjustable box that has a maximum depth of 47mm (from September 2002).
- PVC-U or Aluminium Trunking.
- Additional colours are available on request.
- Also available in lengths tailored to our International customers.



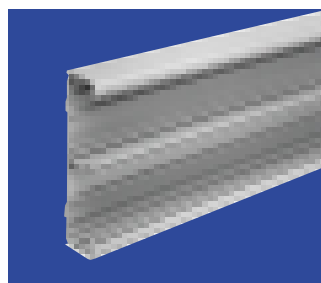
**Sterling Twin Plus**  
Size: 210 x 57mm



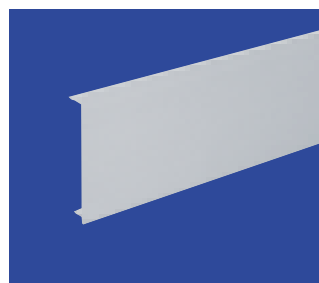
**Base Unit – PVC-U**  
Prod Code EMT60WH Pack 2 x 3m



**Lid – PVC-U**  
Prod Code ETL1WH Pack 8 x 3m



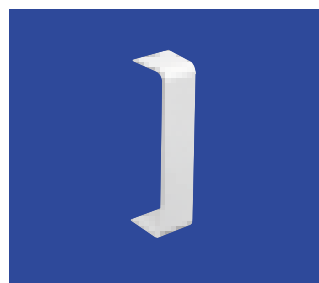
**Base Unit – Aluminium**  
Prod Code EMTA60SG Pack 1 x 3m  
For Bonding Components see page 15.



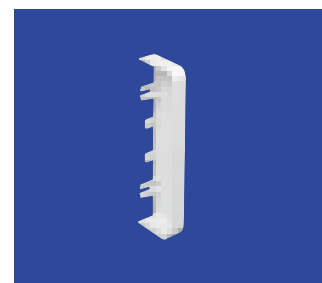
**Main Compartment Lid – Ali.**  
Prod Code LTL1SG Pack 4 x 3m



**Dividing Fillet – PVC-U**  
Prod Code LDF1WH Pack 4 x 3m



**Coupler**  
Prod Code EC60WH Pack 5



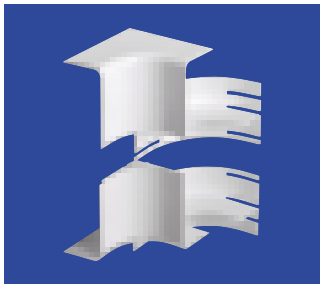
**End Cap**  
Prod Code EEC60WH Pack 5



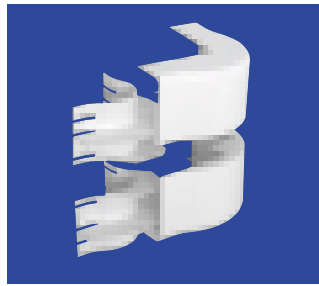


**ASSEMBLIES, FLAT TEES AND COVERS ONLY**

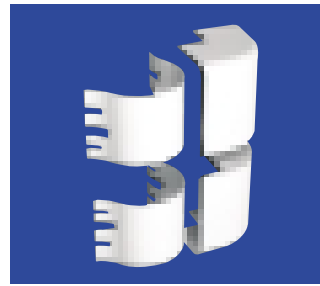
Assemblies include Covers, Cable Inserts in ABS.  
Flat Tees include Covers, Cable Inserts in ABS with Base in PVC-U or Aluminium.  
Covers Only In ABS.



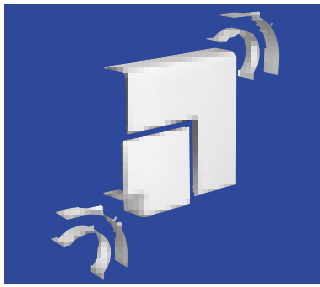
**Data Internal Bend**  
Prod Code                      Pack  
EIB60WH                              1



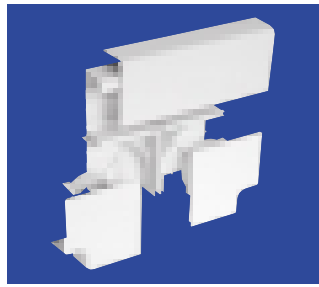
**Data External Bend**  
Prod Code                      Pack  
EXB60WH                              1



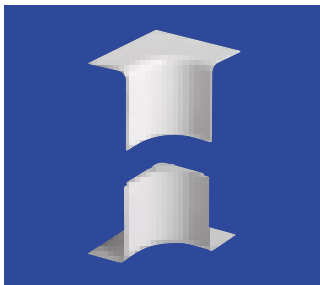
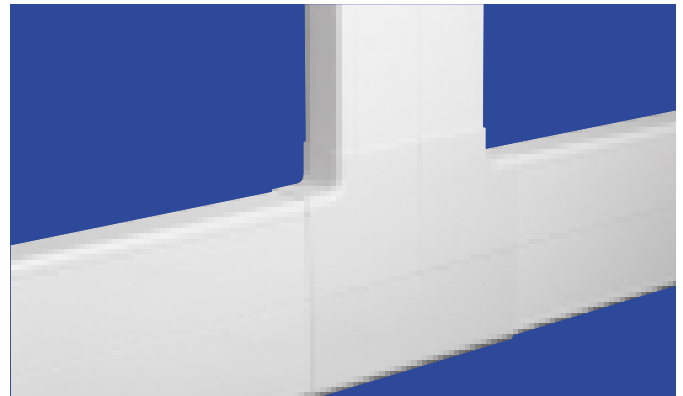
**Standard External Bend**  
Prod Code                      Pack  
ESXB60WH                              1



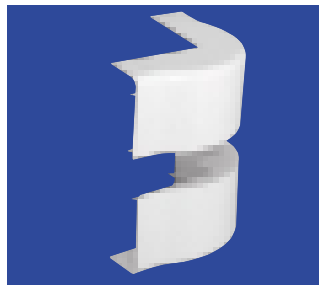
**Data Flat Angle**  
Prod Code                      Pack  
EFA60WH                              1



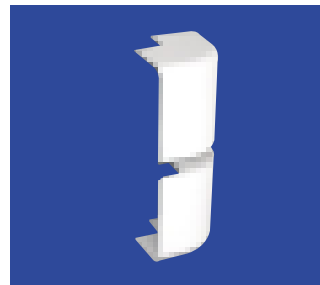
**Data Flat Tee**  
Prod Code                      Base                      Pack  
EFT60WH (shown)      PVC-U                      1  
EFTA60WH                      Aluminium                      1



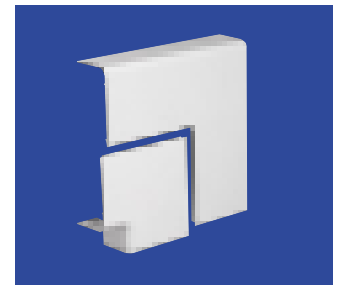
**Internal Bend**  
Prod Code                      Pack  
EIBC60WH                              1



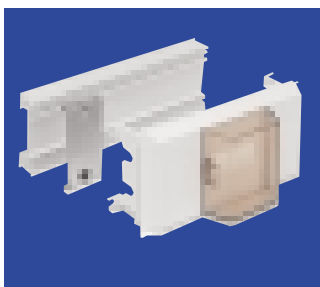
**External Bend (Data)**  
Prod Code                      Pack  
EXBC60WH                              1



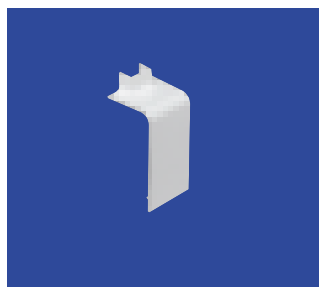
**Standard External Bend**  
Prod Code                      Pack  
ESXBC60WH                              1



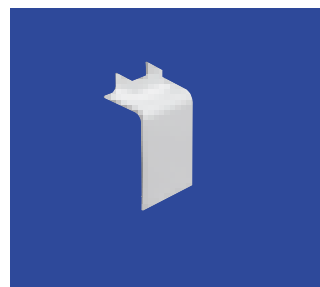
**Flat Bend**  
Prod Code                      Pack  
EFAC60WH                              1



**RCD/MCB Housing**  
Prod Code                      Size                      Pack  
EAHC60WH                      1-4 modules                      1  
RCD not supplied by Marshall-Tufflex.

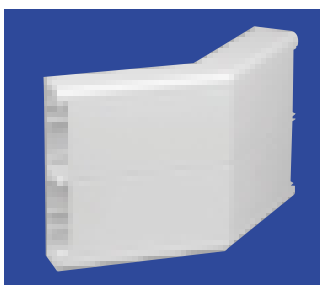


**Mini Trunking Adaptor**  
Prod Code                      Size                      Pack  
EATA62WH                      MMT2                      5



**Mini Trunking Adaptor**  
Prod Code                      Size                      Pack  
EATA64WH                      MMT4                      5

**ADDITIONAL COMPONENTS**



Also available in 135° versions.  
Example shown External Bend  
E135XB60WH.

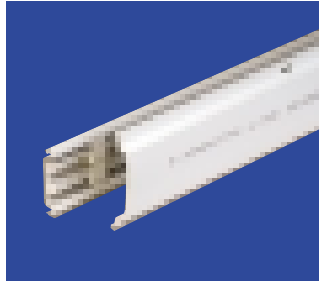
Other bespoke solutions  
available to special order.

Colour Code Suffix		
For alternative colours, please replace the last two letters with those detailed below.		
Code	Colour	System
WH	White	PVC-U or Aluminium
SG	Silver Grey	Aluminium
LG	Light Grey	PVC-U
BG	Beige	PVC-U
BN	Brown	PVC-U
CH	Charcoal	PVC-U



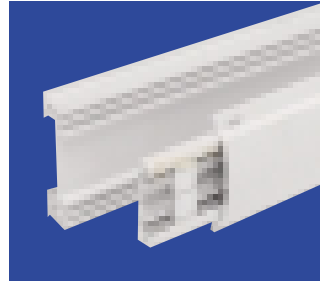
# STERLING BUSBAR

## 63 AMP SINGLE PHASE BUSBAR AND FITTINGS



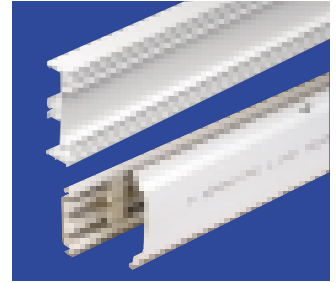
**Busbar Assembly for Sterling, Sterling Mono and Sterling Compact**

Prod Code	Pack
GRA1WH	1 x 3m



**Busbar Assembly for Sterling Twin Plus**

Prod Code	Carrier	Pack
EBS60		1 x 3m
GRA1WH		1 x 3m



**Busbar Support and Assembly for Sterling XL**

Prod Code	Support	Pack
ELBS200		1 x 3m
GRA1WH	Assembly	1 x 3m



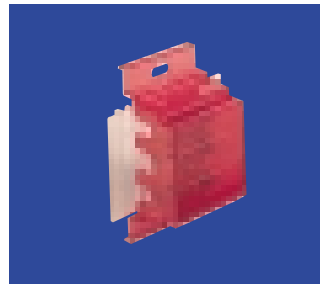
**Coupler**

Prod Code	Pack
GTB1	5



**Terminal Block Main**

Prod Code	Size	Pack
GTM1	16mm	1
GTM2	25mm	1



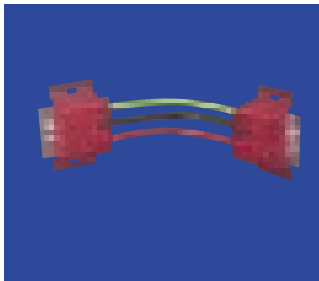
**Terminal Block LH**

Prod Code	Size	Pack
GTL1	16mm	1



**Terminal Block RH**

Prod Code	Size	Pack
GTR1	16mm	1



**Corner Assembly** Inside or outside

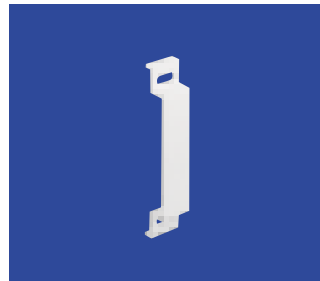
Prod Code	Pack
GCA1	1

Consists of one GTL1, one GTR1 and three 220mm lengths of 16mm<sup>2</sup> cable.



**Cover Connector**

Prod Code	Pack
GCC1WH	10



**Cover Spacer**

Prod Code	Pack
GCS1WH	20

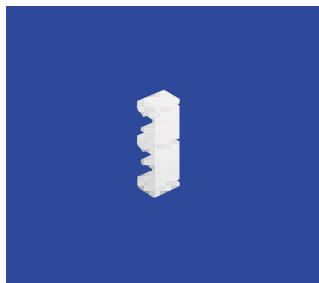
For use with ES1 Lid Spacer on consecutive accessories.



**Cover End**

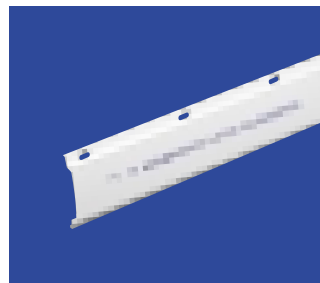
Prod Code	Pack
GTC1WH	10

## ADDITIONAL ITEMS AND SPARES



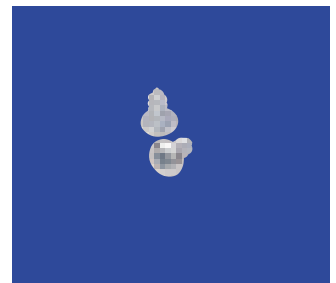
**Carrier Clip**

Prod Code	Pack
GBC1WH	40



**Cover**

Prod Code	Pack
GC1WH	4 x 3m

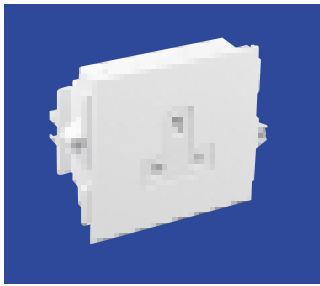


**Additional No. 8 x 8mm Posidrive Pan Head Screws**

Prod Code	Pack
G1310	Cover Screws 40

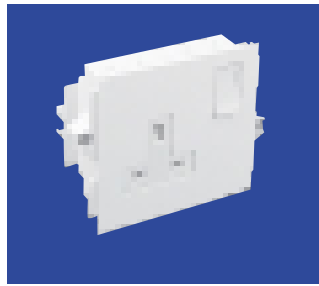


**POWER - BUSBAR  
DIRECT PLUG-IN  
ACCESSORIES**



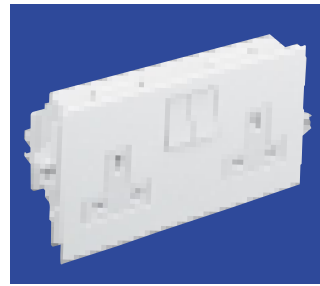
**Direct 13 Amp Single Unswitched Socket**

Prod Code	Pack
GUS1WH	1



**Direct 13 Amp DP Single Switched Socket**

Prod Code	Pack
GSS1WH	1



**Direct 13 Amp DP Twin Switched Socket**

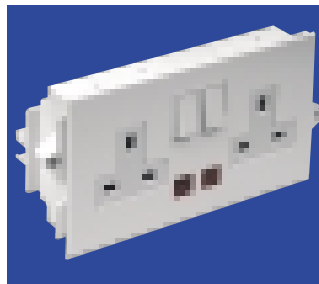
Prod Code	Pack
GSS2WH	1

Supplied with two earth connections.



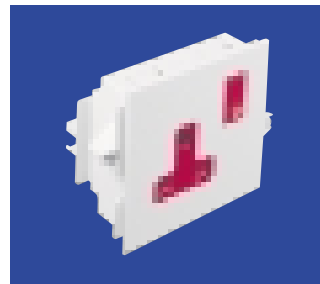
**Direct 13 Amp Single Switched Socket with Neon**

Prod Code	Pack
GSSN1WH	1



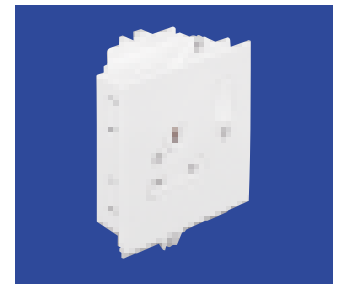
**Direct 13 Amp Twin Switched Socket with Neon**

Prod Code	Pack
GSSN2WH	1



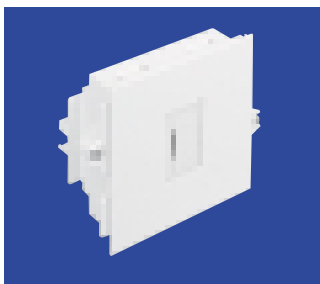
**Direct 13 Amp Single Non-Standard Switched Socket**

Prod Code	Pack
GSS10WH	1



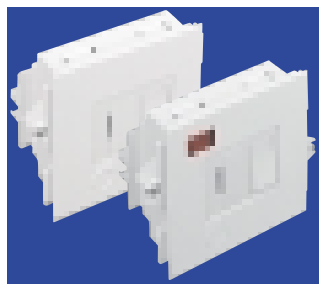
**Direct 13 Amp Single Vertical Mount Switched Socket**

Prod Code	Pack
GSS11WH	1



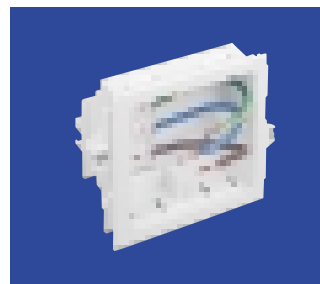
**Direct 13 Amp Unswitched Fused Spur**

Prod Code	Pack
GUFS1WH	1



**Direct 13 Amp Switched Fused Spur**

Prod Code	Pack
GSFS1WH without Neon	1
GSFSN1WH with Neon	1



**Direct 13 Amp Single Gang Accessory Box**

Prod Code	Depth	Pack
GBAB1WH	32mm	1

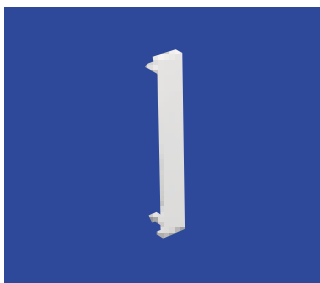


**Direct 13 Amp Twin Gang Accessory Box**

Prod Code	Depth	Pack
GBAB2WH	32mm	1

Supplied with two earth connections.

These accessory boxes will accept most makes of socket with standard fixing centres of 60.3mm and 120.6mm utilising the direct plug-in system of the box. (For use with 13 Amp fused outlets only.)



**Accessory Box Spacer**

Prod Code	Size	Pack
ES1	14mm	4

For use between accessory boxes.

**Additional No 6 x 8mm Counter Sunk Screws**

Prod Code	Pack
G1309	40

Used for Accessory Face Plates

**FOR DATA SOCKETS  
AND  
ACCESSORIES  
SEE PAGE 30**

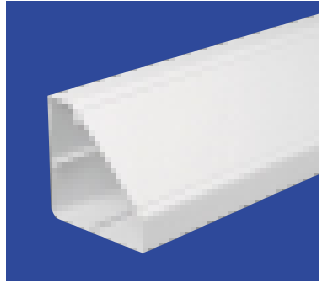
Colour Code Suffix		
For alternative colours, please replace the last two letters with those detailed below.		
Code	Colour	System
WH	White	PVC-U
LG	Light Grey	PVC-U
BG	Beige	PVC-U
BN	Brown	PVC-U
CH	Charcoal	PVC-U



# BENCH TRUNKING

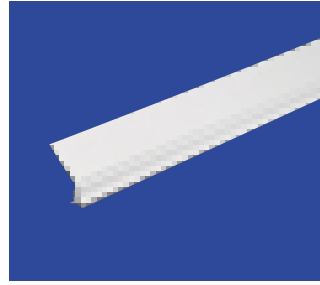
## BENCH TRUNKING PVC-U

Available in white or charcoal.



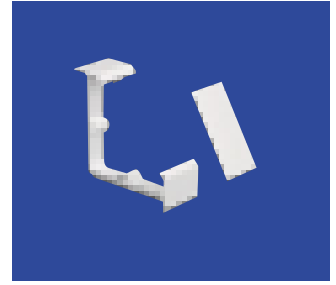
### Trunking Assembly

Prod Code	Size	Pack
MBT105WH	105 x 105mm	2 x 3m



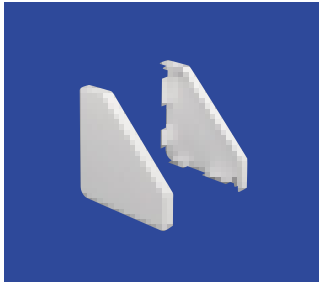
### Dividing Fillet

Prod Code	Pack
BDF105WH	4 x 3m



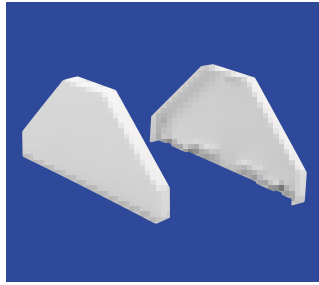
### Coupler

Prod Code	Pack
BTC105WH	1



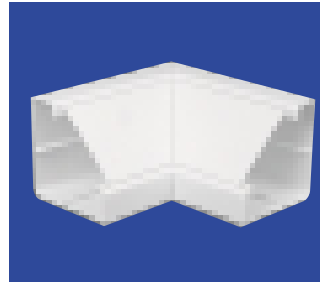
### Single End Caps

Prod Code	Pack
BEC105WH	2



### Double End Caps

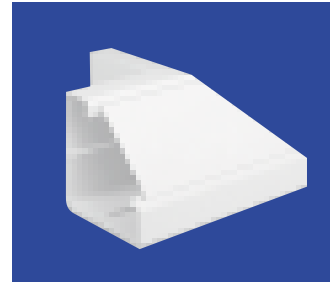
Prod Code	Pack
BECP105WH	2



### Internal Angle

Prod Code	Pack
BIA105WH	1

Couplers required with angles.



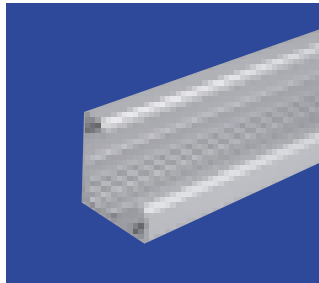
### External Angle

Prod Code	Pack
BEA105WH	1

Couplers required with angles.

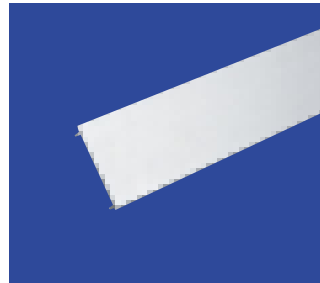
## BENCH TRUNKING ALUMINIUM

Available in silver or white powder coated finish.



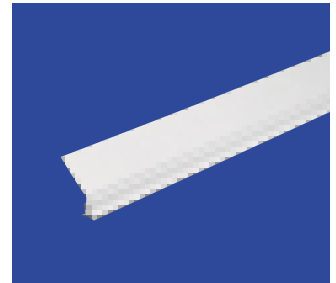
### Trunking Base

Prod Code	Size	Pack
MBTAB105SG	105 x 105mm	2 x 3m



### Lid

Prod Code	Pack
MBTAL105SG Aluminium	2 x 3m
MBTL105WH PVC-U	2 x 3m



### Dividing Fillet PVC-U

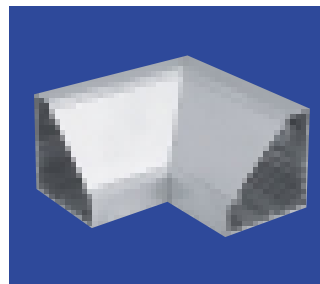
Prod Code	Pack
BDF105WH	4 x 3m



### End Caps

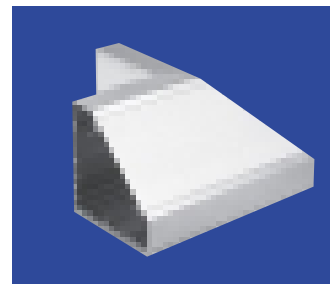
Prod Code	Steel	Pack
BECA105SG		2

With fixing screws.



### Internal Angle

Prod Code	Pack
BIAA105SG Aluminium	1
BIAC105WH Aluminium Base PVC-U Lid (white only)	1

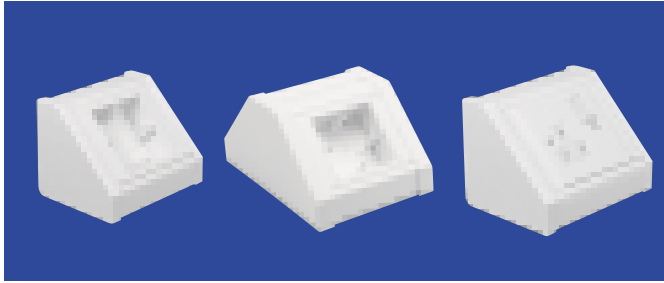


### External Angle

Prod Code	Pack
BEAA105SG Aluminium	1
BEAC105WH Aluminium Base PVC-U Lid (white only)	1

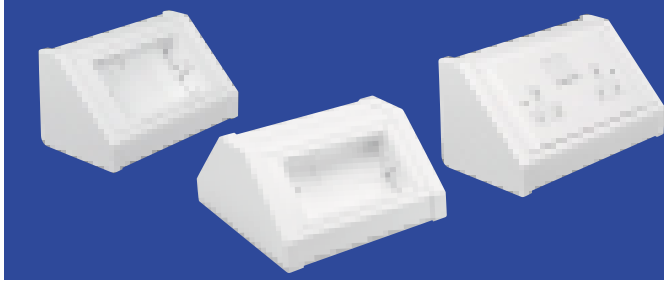


**PVC-U BENCH UNITS**



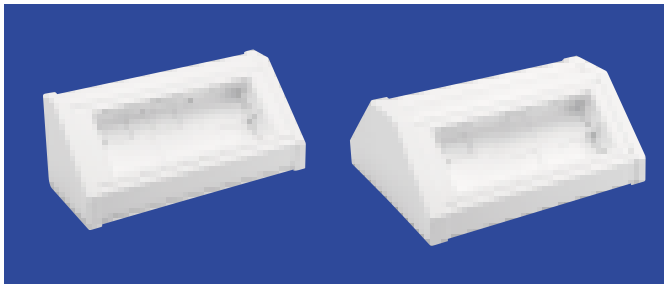
**Bench Unit 1 Gang**

Prod Code		Pack
MBU1WH	Single	1
MDBU1WH	Double	1
MBS1WH		1



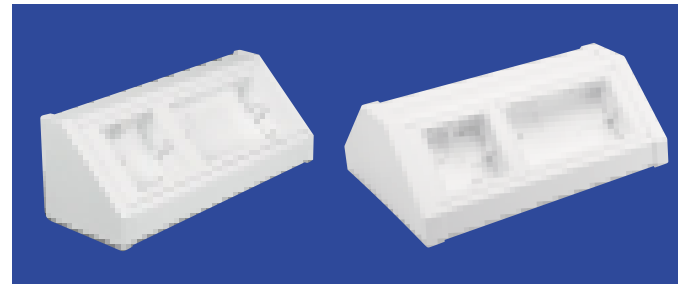
**Bench Unit 2 Gang**

Prod Code		Pack
MBU2WH	Single	1
MDBU2WH	Double	1
MBS2WH		1



**Bench Unit 3 Gang**

Prod Code		Pack
MBU31WH	Single	1
MDBU31WH	Double	1

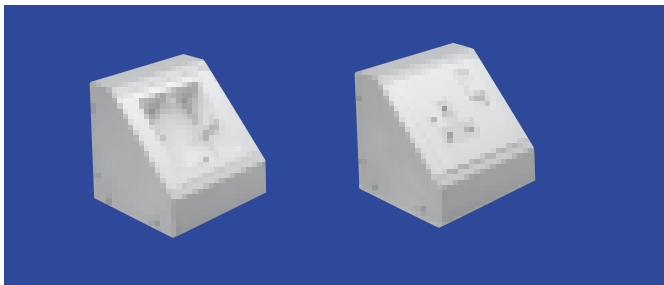


**Bench Unit 1 + 2 Gang**

Prod Code		Pack
MBU3WH	Single	1
MDBU3WH	Double	1

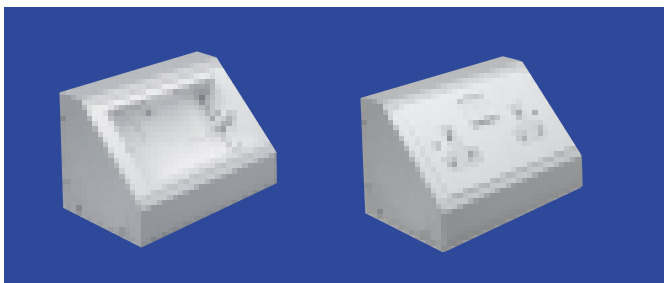
**ALUMINIUM BENCH UNITS**

Available in silver or white powder coated finish.



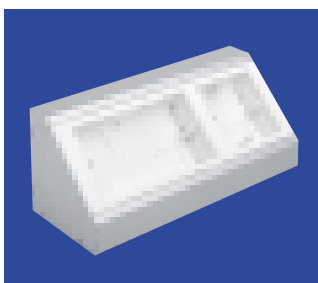
**Bench Unit 1 Gang**

Prod Code		Pack
MBUA1SG		1
MBSA1SG		1



**Bench Unit 2 Gang**

Prod Code		Pack
MBUA2SG		1
MBSA2SG		1



**Bench Unit 1 + 2 Gang**

Prod Code		Pack
MBUA3SG		1

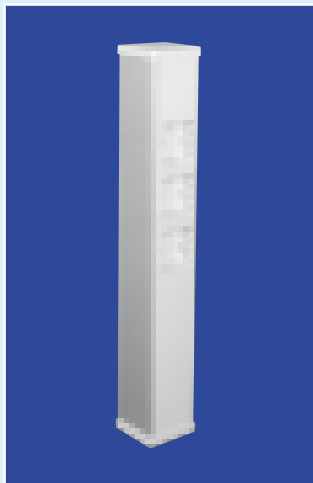
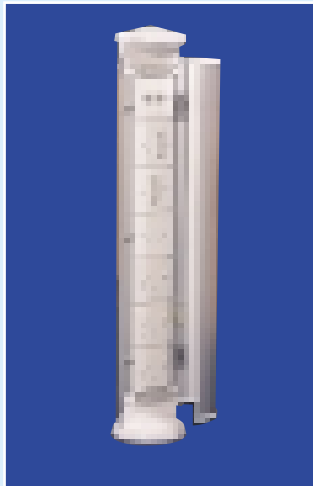
Colour Code Suffix		
For alternative colours, please replace the last two letters with those detailed below.		
Code	Colour	System
WH	White	PVC-U or Aluminium
SG	Silver Grey	Aluminium
CH	Charcoal	PVC-U



## STERLING POWERPOLES AND POSTS

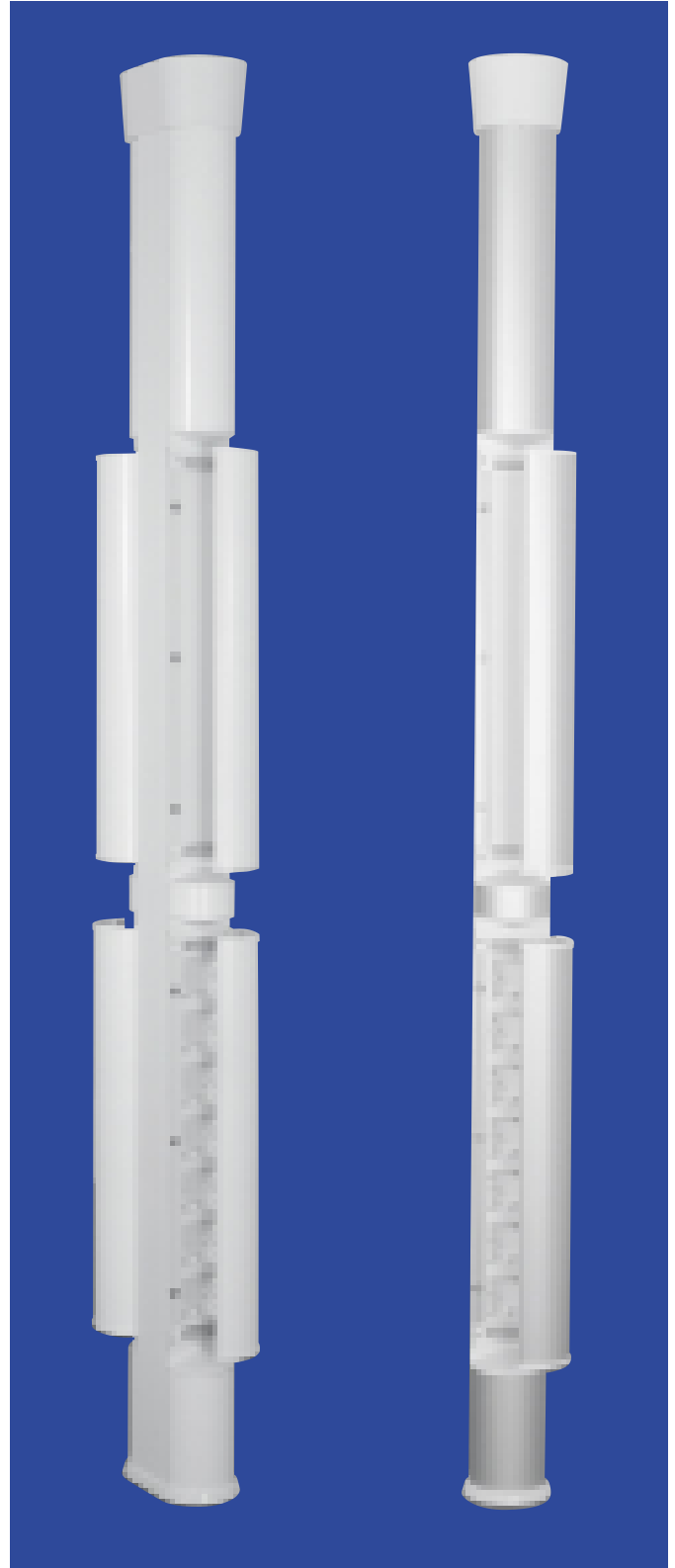
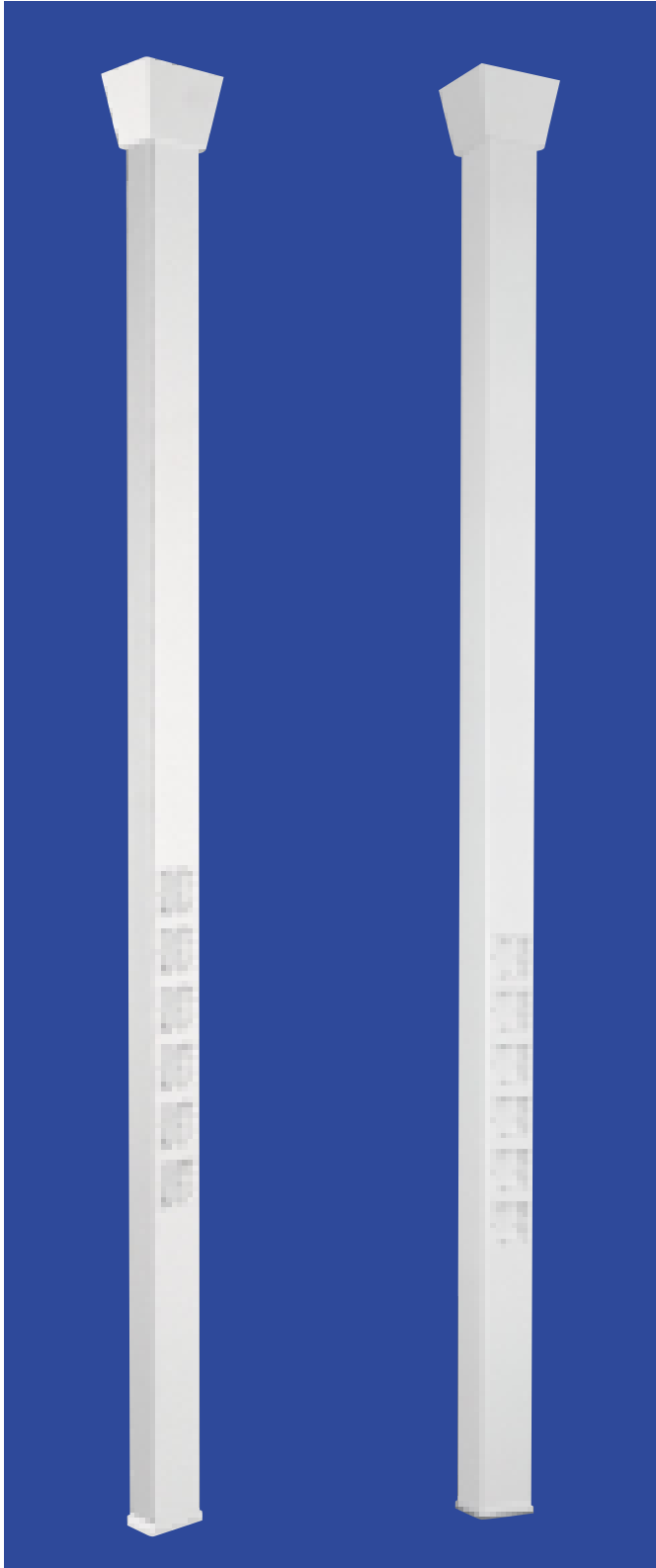
PowerPoles and PowerPosts are both elegant and practical, offering a solution to the running of services such as power, data and telecoms to island work stations.

Available in standard anodised and powder coated white finish from stock, other colours are available to special order. For bespoke solutions to your requirements please contact our Technical Hotline +44 (0) 1424 443348 for advice.





# STERLING POWERPOLES AND POSTS



## PowerPole Single Sided

Prod Code	Pack
PPS36001 with 250mm adjustable slide*	1
PPS36002 with 1150mm adjustable slide*	1

\*For adjustable height in ceiling void.  
The Single Sided PowerPole comes complete with 6 Accessory Boxes. Available in white powder coated or natural anodised finish.

## PowerPole Double Sided

Prod Code	Pack
PP36001 with 250mm adjustable slide*	1
PP36002 with 1150mm adjustable slide*	1

\*For adjustable height in ceiling void.  
The Double Sided PowerPole comes complete with 6 Accessory Boxes. Available in white powder coated or natural anodised finish.

## Eliptical Double Sided PowerPole

Prod Code	Pack
NPPE36001441	1

Maximum height of the Series 2 PowerPole is 3686mm. For additional heights within ceiling voids a 1 metre adjusting slide is available.

The Series 2 Double Sided PowerPole comes complete with 14 Accessory Boxes and a further 14 Boxes can be accommodated.

## Circular Single Sided PowerPole

Prod Code	Pack
NPPC3600721	1

Maximum height of the Series 2 PowerPole is 3686mm. For additional heights within ceiling voids a 1 metre adjusting slide is available.

The Series 2 Single Sided PowerPole comes complete with 7 Accessory Boxes and a further 7 Boxes can be accommodated.



# STERLING POWERPOLE AND POWERPOST continued



### Double Sided PowerPost

Prod Code	Pack
NPPE811142	1

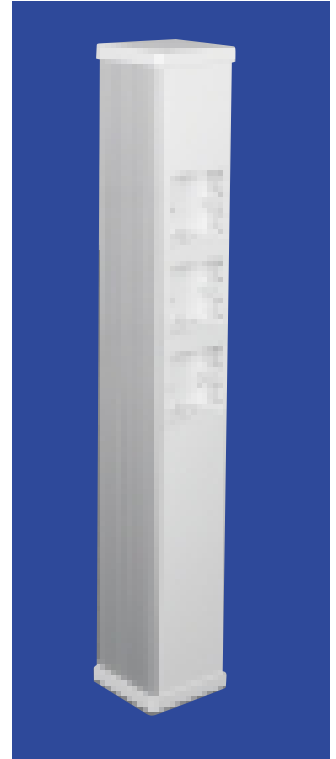
### Single Sided PowerPost

Prod Code	Pack
NPPC80671	1

Overall height of the Series 2 PowerPost is 838mm.

The Series 2 Double Sided PowerPost comes complete with 14 Accessory Boxes.

The Series 2 Single Sided PowerPost comes complete with 7 Accessory Boxes.



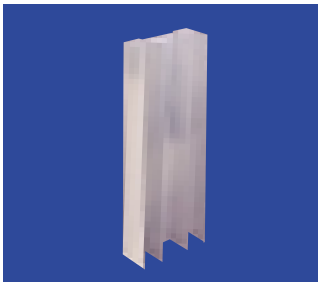
### PowerPost Double Sided

Prod Code	Pack
PP685	1

Overall height of the Sterling PowerPost is 692 mm.

The PowerPost comes complete with 6 Accessory Boxes.

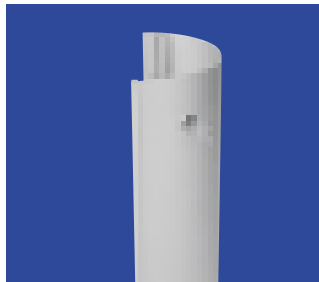
Available in white powder coated or natural anodised finish.



### Extended Adjusting Slide

Prod Code	Pack
PHAS2 1.15 metre	1

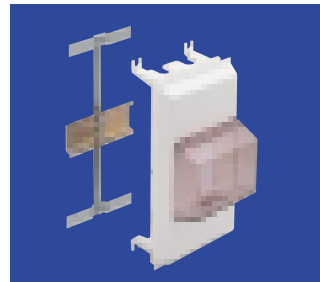
For PowerPole only.



### Locking Assembly

Prod Code	Pack
NPPLA1	1

Contact Technical Services for details.



### RCD/MCB Housing

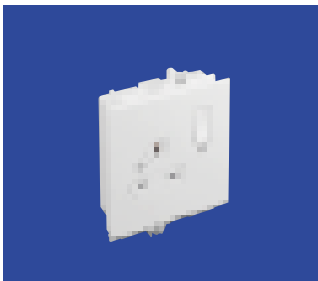
Prod Code	Pack
EAH2	1

EAHC2 with cover (as shown) 1  
RCD not supplied by Marshall-Tufftex.



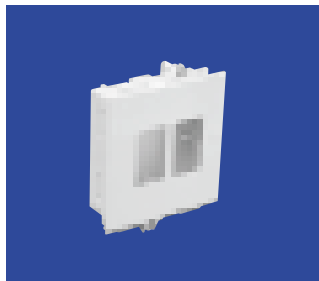
### Single Gang Accessory Box

Prod Code	Pack
ESSB1	20



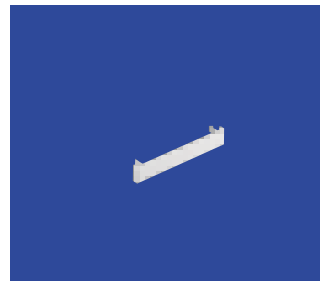
### Wired 13 Amp Single Vertical Mount Switched Socket

Prod Code	Pack
ESS11	1



### Vertical Flush Data Module

Prod Code	Size	Pack
EM526	2 x LJ6	1



### Accessory Box Spacer

Prod Code	Width	Pack
ES1	14mm	4

**FOR ADDITIONAL  
DATA AND  
TELECOMMUNICATION  
OUTLETS  
SEE PAGE 30**





# STERLING LIGHTING KITS

Sterling Lighting Kits comprise all the components to enable you to add light to plastic and aluminium versions of the comprehensive range of Sterling products.

- Miniature compact electronic fluorescent fitting, 17W, 1050 lumens 3500K (undiffused), length 500mm approx, fluorescent fitting life 10,000 hours.
- Input connection lead.
- Self-adhesive fluorescent fitting mounting clips.
- Self-adhesive vertical support clip.
- Opal diffuser lid, PVC-U.
- Diffuser lid couplers, PVC-U.
- Switch and mounting box assemble, 6A, 2-way.
- Installation notes.

Prod Code	Application
ELK1WH	Sterling Mono Trunking Sterling Compact Trunking - Main Compartment Sterling Trunking - Main Compartment Sterling XL Trunking - Main Compartment Sterling PowerPoles and PowerPosts Sterling Bench Trunking
ELK2WH	Sterling XL Trunking - Angled Outer Compartment
ELK3WH	Sterling XL Trunking - Square Outer Compartment



ELK1WH



Medical Service Unit showing ELK2WH

Call our Technical Hotline on +44 (0) 1424 443348 for further advice on the Sterling Lighting Kit and for details of custom-designed applications.

ANOTHER BRIGHT IDEA FROM MARSHALL-TUFFLEX



Sterling XLProfile 302 showing ELK1452WH Lighting Kit

Sterling High Efficiency Lighting Kits using a 14 watt T5 Lamp and electronic control gear offers virtually constant level lumen output throughout its 16000 hours of operational life. A polycarbonate insert diffuser in the cover offers a smooth flush appearance and a built-in deflector for light control. With modified control gear the lighting kit is eminently suited for dimming applications.

Prod Code	Application	Length
ELK1452WH	Sterling XL - Angled Outer Compartment	550mm
ELK1453WH	Sterling XL - Square Outer Compartment	550mm

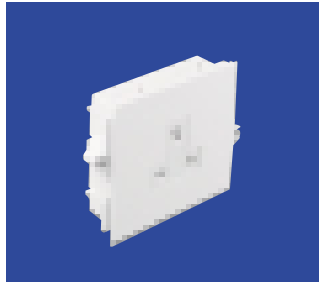
Other Light Outputs available call our Technical Hotline on +44 (0) 1424 443348 for further advice and for details of custom-designed applications.



# STERLING WIRED ACCESSORIES

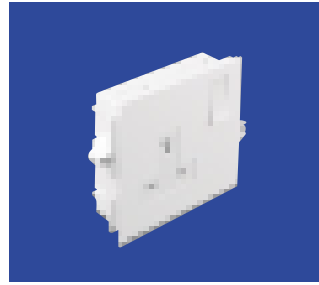
## WIRED ACCESSORIES

Twin Sockets are supplied with two earth terminals.



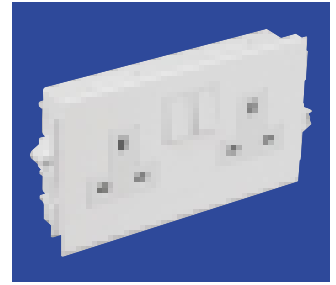
**13 Amp Single Unswitched Socket**

Prod Code	Pack
EUS1WH	1



**13 Amp DP Single Switched Socket**

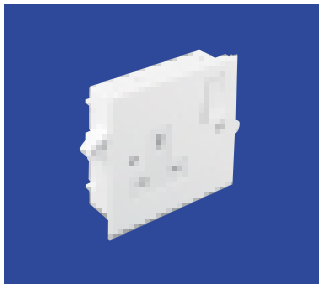
Prod Code	Pack
ESS1WH	1



**13 Amp DP Twin Switched Socket**

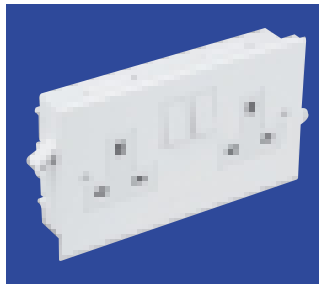
Prod Code	Pack
ESS2WH	1

Two earth terminals



**13 Amp DP Single Switched Socket (Front Fix)**

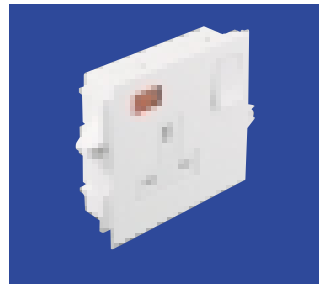
Prod Code	Pack
ESS4WH	1



**13 Amp DP Twin Switched Socket (Front Fix)**

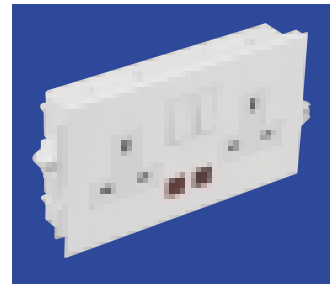
Prod Code	Pack
ESS3WH	1

Two earth terminals



**13 Amp Single Switched Socket with Neon**

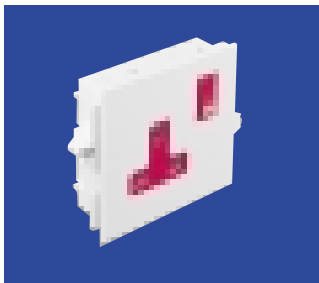
Prod Code	Pack
ESSN1WH	1



**13 Amp DP Twin Switched Socket with Neon**

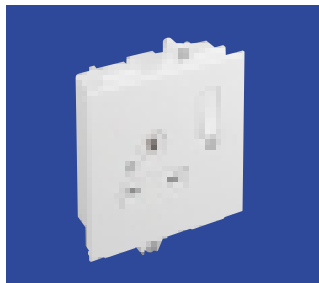
Prod Code	Pack
ESSN2WH	1

Two earth terminals



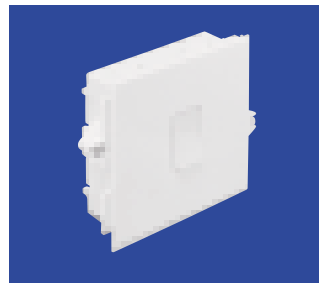
**13 Amp Single Non-Standard Switched Socket**

Prod Code	Pack
ESS10WH	1



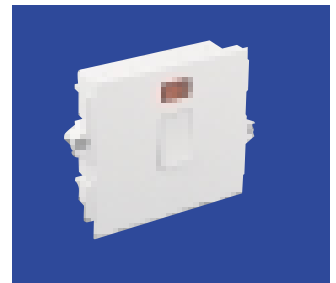
**13 Amp Single Vertical Mount Switched Socket**

Prod Code	Pack
ESS11WH	1



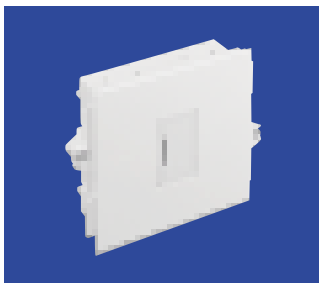
**Two Way Switch**

Prod Code	Rating	Pack
E6S1WH	6 Amp	1



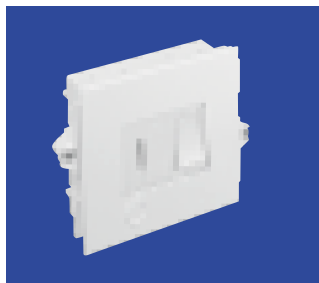
**DP Switch with Neon**

Prod Code	Rating	Pack
E20DN1WH	20 Amp	1
E32DN1WH	32 Amp	1



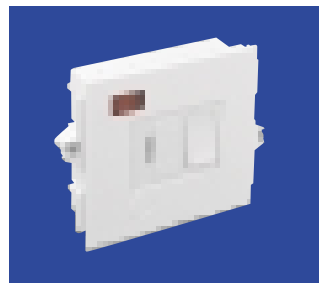
**13 Amp Unswitched Fused Spur**

Prod Code	Pack
EUFS1WH	1



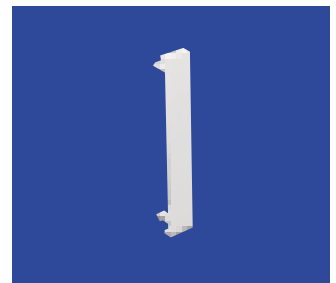
**13 Amp Switched Fused Spur**

Prod Code	Pack
ESFS1WH	1



**13 Amp Switched Fused Spur with Neon**

Prod Code	Pack
ESFSN1WH	1



**Accessory Box Spacer**

Prod Code	Size	Pack
ES1WH	14mm	4

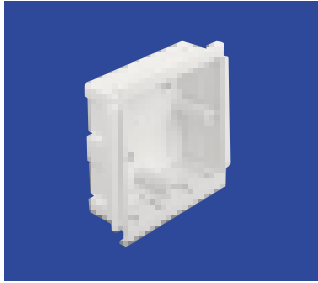
For use between accessory boxes.

Colour Code Suffix		
For alternative colours, please replace the last two letters with those detailed below.		
Code	Colour	System
WH	White	PVC-U
LG	Light Grey	PVC-U
BG	Beige	PVC-U
BN	Brown	PVC-U
CH	Charcoal	PVC-U



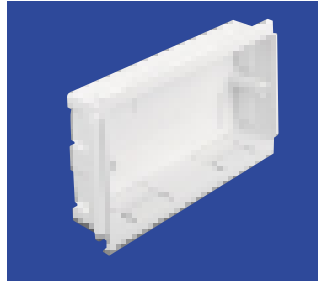
## STERLING ACCESSORY BOXES

### BRITISH STANDARD ACCESSORY BOXES



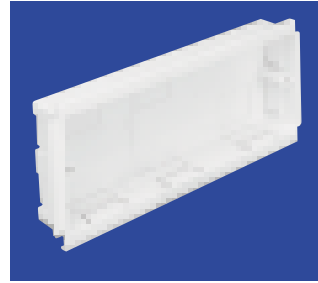
**Single Gang Accessory Box**

Prod Code	Depth	Pack
ESSB1WH	30mm	20



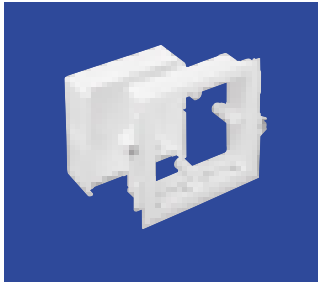
**Twin Gang Accessory Box**

Prod Code	Depth	Pack
ESSB2WH	30mm	10



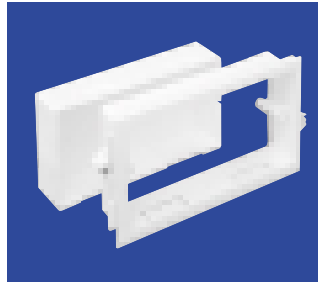
**Triple Gang Accessory Box**

Prod Code	Depth	Pack
ESSB3WH	30mm	5



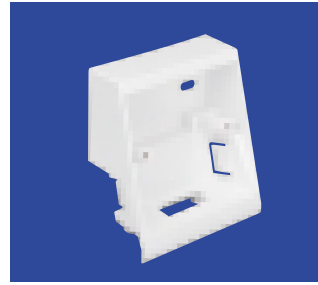
**Single Gang Adjustable  
Accessory Box and Frame**

Prod Code	Depth	Pack
ESSAB1WH	32mm – 47mm	10
ESSF1WH	Frame only	10



**Twin Gang Adjustable  
Accessory Box and Frame**

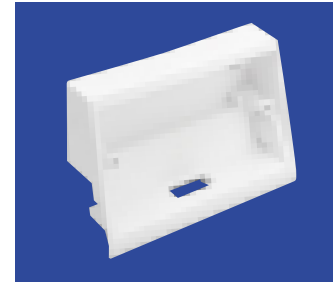
Prod Code	Depth	Pack
ESSAB2WH	32mm – 47mm	5
ESSF2WH	Frame only	5



**Single Gang Angled  
Accessory Box**

Prod Code	Depth	Pack
EAAB10WH	28mm	5

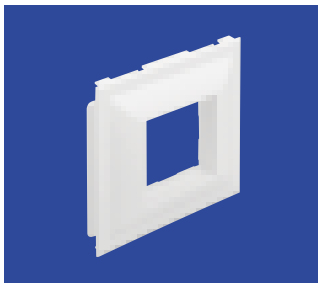
For use with ETAC1WH Angled Cover only.



**Twin Gang Angled  
Accessory Box**

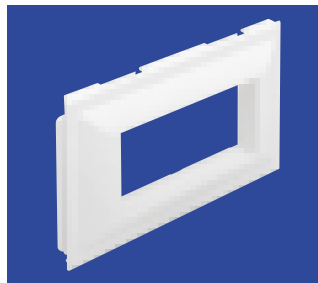
Prod Code	Depth	Pack
EAAB20WH	28mm	5

For use with ETAC1WH Angled Cover only.



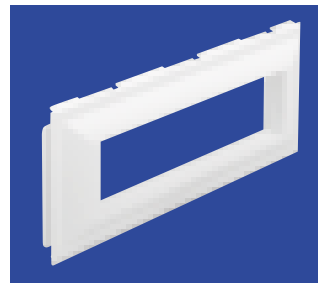
**Single 45mm Accessory Plate**

Prod Code	Pack
ETOP10WH	20



**Twin 45mm Accessory Plate**

Prod Code	Pack
ETOP20WH	15



**Triple 45mm Accessory Plate**

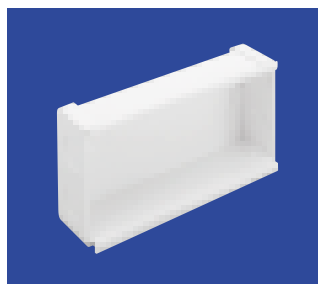
Prod Code	Pack
ETOP30WH	10

### INTERNATIONAL ACCESSORY BOXES



**Duplex 83.5mm  
Accessory Plate**

Prod Code	Pack
ETOP180WH	15



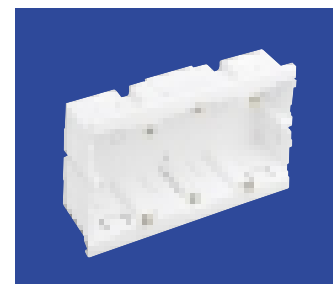
**Box for  
Accessory Plates**

Prod Code	Pack
ETOB10WH	1
ETOB20WH	1
ETOB30WH	1
ETOB180WH	15



**Single Gang Schuko  
Accessory Box**

Prod Code	Pack
ESSBU1WH	10



**Twin Gang Schuko  
Accessory Box**

Prod Code	Pack
ESSBU2WH	5

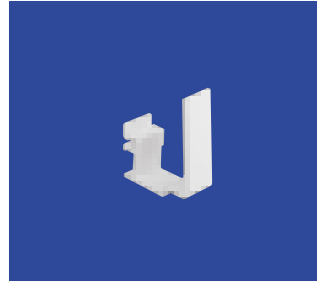
**FOR ADDITIONAL ACCESSORIES AND BOXES  
SEE PAGES 26 TO 30**

**FOR BUSBAR FITTINGS SEE  
PAGES 18 TO 19**



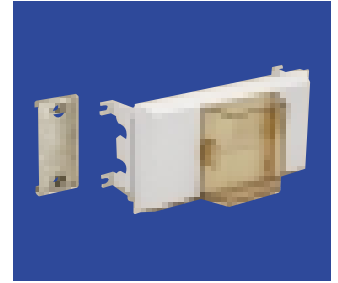
# ADDITIONAL STERLING COMPONENTS

## STERLING MONO 10



**Cable Retainer**  

Prod Code	Pack
EMCR1WH	10



**RCD/MCB Housing**  

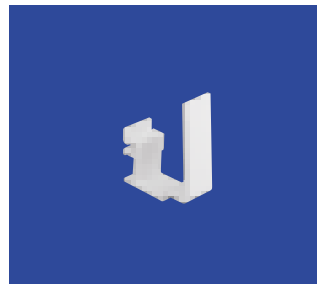
Prod Code	Pack
EAH1WH	1
EAHC1WH with cover (as shown)	1

## STERLING MONO 20



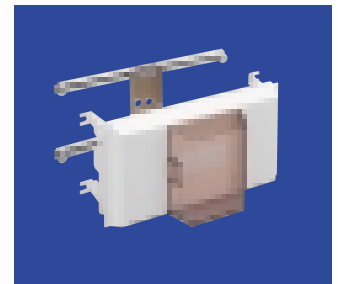
**Main Crossover Bridge**  

Prod Code	Pack
EMCB1WH	5



**Main Cable Retainer**  

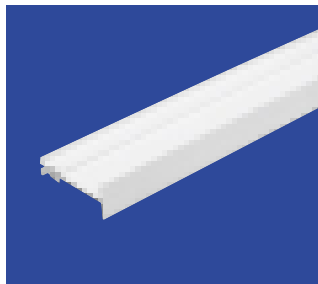
Prod Code	Pack
EMCR1WH	10



**RCD/MCB Housing**  

Prod Code	Pack
EAH5WH	1
EAHC5WH with cover (as shown)	1

## STERLING MONO 30



**Dividing Fillet**  

Prod Code	Pack
EDF30WH	8 x 3m



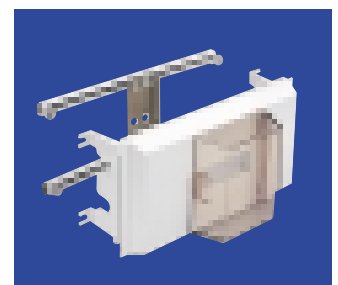
**Main Crossover Bridge**  

Prod Code	Pack
EMCB1WH	5



**Main Cable Retainer**  

Prod Code	Pack
EMCR1WH	10



**RCD/MCB Housing**  

Prod Code	Pack
EAHC6WH	1

RCD not supplied by Marshall-Tufflex

**Sterling Profile 1 to Mono 10 Flat Bends and Tee.**  
**For bespoke solutions to your requirements please contact our Technical Hotline +44 (0) 1424 443348 for advice. See page 35 for more examples.**

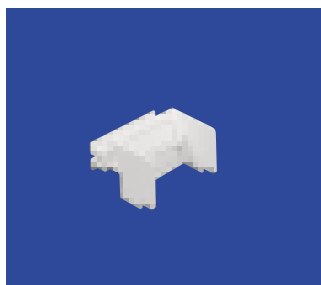


# ADDITIONAL STERLING COMPONENTS continued



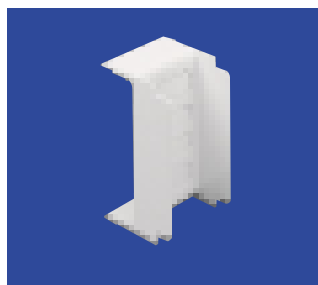
**Angled Crossover Bridge**  

Prod Code	Pack
EACB1WH	5



**Square Crossover Bridge**  

Prod Code	Pack
ESCB1WH	5

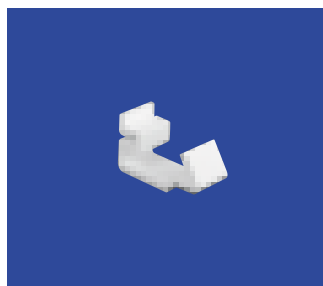


**Main Crossover Bridge**  

Prod Code	Pack
EMCB1WH	5

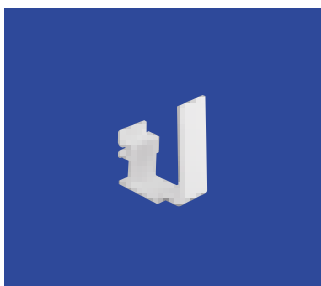
## STERLING COMPACT, STERLING AND STERLING ALUMINIUM

**EACB1WH/ESCB1WH/EMCB1WH Crossover Bridges**  
 Provide segregation of services crossing from one compartment to another.



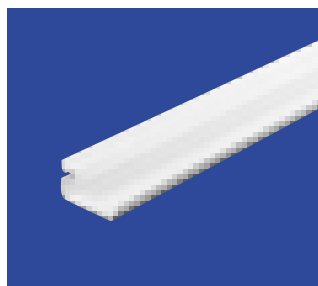
**Angled Cable Retainer**  

Prod Code	Pack
EACR1WH	10



**Main Cable Retainer**  

Prod Code	Pack
EMCR1WH	10



**Cable Tray**  

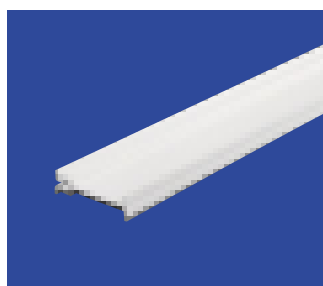
Prod Code	Pack
ECT1WH	4 x 3m

**EACR1WH Angled Cable Retainer**

Clips to nibs to provide additional cable retention in the upper angled or square compartment. For the lower angled or square compartment, Cable Tray is recommended.

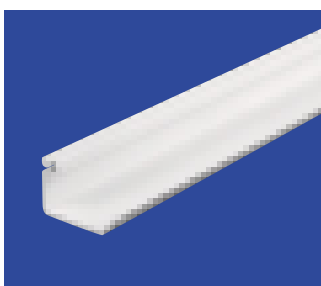
**EMCR1WH Main Cable Retainer**  
 The recommended cable retainer for all compartments which use the ETL1WH Lid.

**ECT1WH Cable Tray**  
 Provides support of cables when angled or square cover is used as lower compartment.



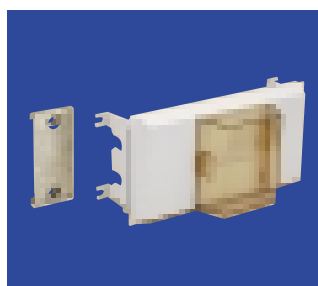
**Dividing Fillet**  

Prod Code	Pack
EDF1WH	4 x 3m



**Busbar Compartment Dividing Fillet**  

Prod Code	Pack
EDF2WH	4 x 3m



**RCD/MCB Housing**  

Prod Code	Pack
EAH1WH	1
EAH1WH with cover (as shown)	1

**EDF1WH/EDF2WH Dividing Fillet**

EDF1WH allows additional segregation of services. EDF2WH allows for additional segregation on ETB2WH (Main compartment only).

**EATA2WH/EATA4WH/ESTA2WH/ESTA4WH Mini-Trunking Adaptors**

Allows the transfer of cables from Sterling to Marshall-Tufflex Mini-Trunking, sizes MMT2 and MMT4.

**EAHC1WH RCD/MCB Housing**

Can also be used with Busbar Sterling. Up to 4 modules can be accommodated. RCD not supplied by Marshall-Tufflex.



**Angled Mini-Trunking Adaptor**  

Prod Code	Size	Pack
EATA2WH	MMT2	5
EATA402SG	MMT2	5



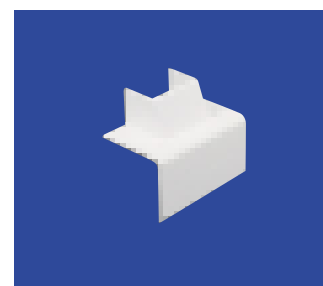
**Angled Mini-Trunking Adaptor**  

Prod Code	Size	Pack
EATA4WH	MMT4	5
EATA404SG	MMT4	5



**Square Mini-Trunking Adaptor**  

Prod Code	Size	Pack
ESTA2WH	MMT2	5
ESTA402SG	MMT2	5



**Square Mini-Trunking Adaptor**  

Prod Code	Size	Pack
ESTA4WH	MMT4	5
ESTA404SG	MMT4	5

Colour Code Suffix		
For alternative colours, please replace the last two letters with those detailed below.		
Code	Colour	System
WH	White	PVC-U
LG	Light Grey	PVC-U
BG	Beige	PVC-U
BN	Brown	PVC-U
CH	Charcoal	PVC-U



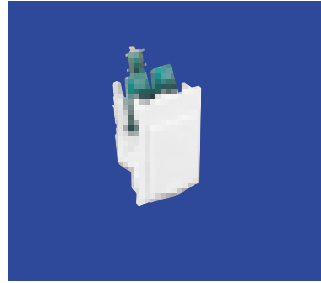
# ADDITIONAL STERLING COMPONENTS continued

## MT FLAPJACK RJ45 OUTLETS

MT Flapjack Outlets incorporate connection modules that comply with Cat. 5e and Cat. 6 latest standard proposals of ISO/IEC. They allow a tool-free and time-saving connection of the installation cables.

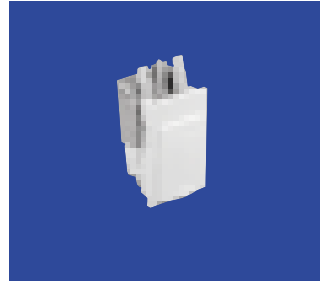
Their unique hinged design makes them ideal for mounting in faceplates and floor boxes and the narrow entry angle of patch cords ensures minimum bend radius and reduces the risk of Return Loss problems. The MT Flapjack is smart and unobtrusive. In its closed position it helps to deter unwanted connection to unused ports and prevents contamination of socket contacts from ingress of dust and dirt.

- Available in Cat 5e and Cat 6 for UTP and STP.
- Conform to requirements according to the EIA/TIA.
- Unshielded and shielded options available.
- Suitable for mounting in industry standard faceplates and floor boxes.
- 37 x 22.5mm cut out size (6c).
- 25mm depth required behind flush plates.
- 19mm depth required behind raised faceplate.
- Halogen-free material.
- Flapjack module comes with EMC cover (shielded), dust cover, cable tie and installation instructions.
- Tool-free connection technique (IDC) with AWG 22-24 wire diameter.



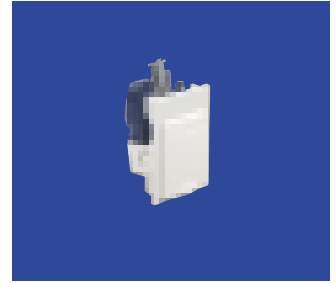
**Cat. 5e Unshielded**

Prod Code	Size	Pack
FD29WH	6c	1



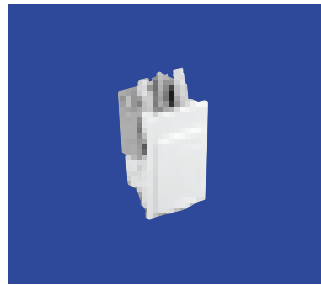
**Cat. 5e Shielded**

Prod Code	Size	Pack
FD30WH	6c	1



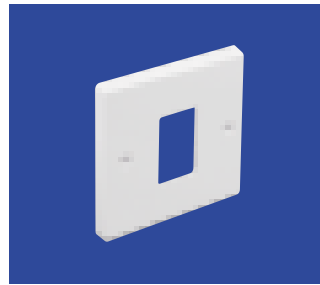
**Cat. 6 Unshielded**

Prod Code	Size	Pack
FD31WH	6c	1



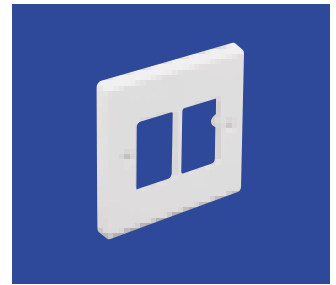
**Cat. 6 Shielded**

Prod Code	Size	Pack
FD32WH	6c	1



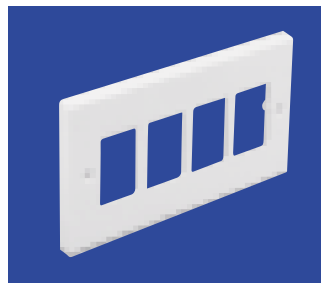
**Single 1 x 6c**

Prod Code	Size	Pack
EP316WH	1 x 6c	1



**Single 2 x 6c**

Prod Code	Size	Pack
EP326WH	2 x 6c	1



**Twin Gang 4 x 6c**

Prod Code	Size	Pack
EP446WH	4 x 6c	1



**Standard Twin Plate**

Prod Code	Size	Pack
EP846WH	4 x 6c Vertical	5

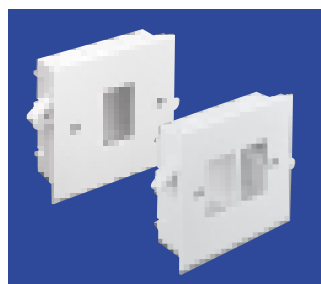


**6c Blank Fascia**

Prod Code	Size	Pack
FM93WH	6c	1

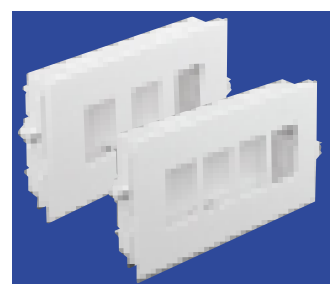
## ACCESSORY PLATES

Fit BS Standard Accessory Boxes.  
 1 gang fixing centre 60.3mm  
 2 gang fixing centre 120.6mm  
 6c aperture. Size: 37 x 22.3mm, depth 9mm.



**Flush Module**

Prod Code	Size	Pack
EM116WH	1 x 6c	1
EM126WH	2 x 6c	1



**Flush Module**

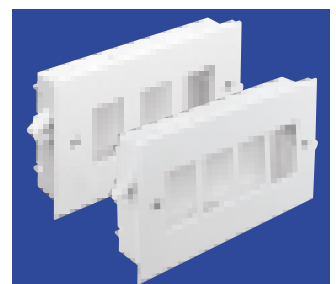
Prod Code	Size	Pack
EM236WH	3 x 6c	1
EM246WH	4 x 6c	1

**Front Fixing Flush Module**

Prod Code	Size	Pack
EM316WH	1 x 6c	1
EM326WH	2 x 6c	1

**Front Fixing Flush Module**

Prod Code	Size	Pack
EM436WH	3 x 6c	1
EM446WH	4 x 6c	1



# MATERIAL DATA TECHNICAL INFORMATION

## PVC-U

Cable Management Products are produced in Extra Super High Impact PVC-U grade material capable of withstanding the most hazardous conditions on site and which exceeds the most stringent requirements of the British and IEC Standards where applicable.

### Characteristics of Extra Super High Impact PVC-U

Specific Gravity	1.35-1.45
Co Efficient of Linear Expansion	$7 \times 10^{-5}/m/^{\circ}C$
Water Absorption	Negligible
Impact Resistance	See notes below
Electric Strength	To the requirements of BS4607 and BS6099
Flammability	BS4607 and BS6099
Oxygen Index	42%
Tensile Strength	492/562 kg/cm <sup>2</sup> (7,000/8,000 lb per sq in)
Insulation Resistance	To the requirements of BS4678, BS4607 and BS6099
Chemical Resistance	See notes
Vicat Softening Point (Conduit & Trunking)	80°C BS2782-120B (5 kg)
Vicat Softening Point (Moulded Fittings)	76°C BS2782-120B (5 kg)

## CHEMICAL RESISTANCE

The material is virtually unaffected by solutions of inorganic acids, alkalis and salts and is resistant to many organic chemicals. It may be softened by some organic materials such as Ketones and aromatic compounds. It will not corrode. See Chemical Resistance table for further details.

## FIRE RESISTANCE

The materials used in the trunking is self extinguishing and complies with the requirements of BS476 Parts 6 and 7, BS4678 Part 4 and BS6099 Section 2:2.

Non-flame propagating to BSEN50085 and BSEN50086.

## THERMAL PROPERTIES

The trunking is designed to accommodate variations of ambient temperature equating to 5.25mm/3m for a temperature rise of 25°C.

Operating temperatures: -5 to 60°C.

Thermal conductivity: 0.19 w/m/°C.

## IMPACT RESISTANCE

High impact resistant. The material is formulated to comply with the -5°C clause of BS4678 Part 4 (1982) Cable Trunking Standard.

Heavy Gauge BSEN50086.

## STANDARDS

Trunking systems are manufactured to comply with the requirements of BS4678 Part 4 (1982) where applicable. Conduit systems to comply with the requirements of BSEN50086, BS6099: 1982 and BS4607.

## POLYCARBONATE

### MOULDINGS ONLY

Vicat softening point – ISO 306	VST/B 145°C
Flammability to UL94 @ 1.5mm	94V-2
Flammability – Oxygen index	35%
Density	1.2g/cm <sup>3</sup>
Water absorption (in water)	0.35%

## CHEMICAL RESISTANCE

Polycarbonate is resistant to most mineral and organic acids, a number of fats and oils, saturated aliphatic and aromatic hydrocarbons and alcohols with the exception of methyl alcohol. It is not resistant to alkalis ammonia gas and its solution, nor to amines.

## ALUMINIUM

Grade HE9TF: Sterling Screen Insert.

Grade 6060TS: Sterling Series 2, PowerPole and Post, Bench Trunking Aluminium, Sterling

Aluminium, Sterling XL Aluminium, Service Rail.

Tensile strength: 190n/mm<sup>2</sup>

Co Efficient of Linear Expansion:  $24 \times 10^{-6}/m/^{\circ}C$ .

Thermal conductivity: 120w/m/°C.

## PVC-U CHEMICAL RESISTANCE TABLE

The resistance of unplasticised PVC to a wide range of chemicals is listed in the following table.

The symbols used to denote performance are as follows:

√ Satisfactory

# Some attack or absorption: the material may be considered for use when alternative materials are unsatisfactory and where limited life is acceptable. When PVC is to be used with such chemicals full scale trials under realistic conditions are particularly necessary.

≈ Unsatisfactory: so rated because of decomposition, solution, swelling loss of ductility etc, of the samples tested.

For clarification and for details of resistance to other chemicals please call our technical information line on +44 (0) 1424 443348.

**NOTE:** To determine the suitability of PVC-U for external applications we strongly recommend you contact our Technical Sales Department on +44 (0) 1424 443348.

Chemical	Concentration	Unplasticised PVC	
		20°C	60°C
acetaldehyde	40% aq. solution	√	≈
acetic acid	60% aq. solution	√	≈
acetic anhydride		≈	≈
acetone	Traces	≈	≈
alcohol, ethyl	40% w/w water	√	#
alcohol, isopropyl		√	√
alcohol, menthyl	6% aq. solution	√	√
	100%	√	#
aliphatic hydrocarbons		√	√
aluminium chloride		√	√
aluminium hydroxide		√	√
ammonia	0.885G., aq solution	√	√
	Anhydrous gas	≈	≈
	Anhydrous liquid	≈	≈
ammonium chloride		√	√
ammonium hydroxide		√	√
aniline		≈	≈
animal oils		√	√
aqua regia	Dilute	√	√
	Concentrated	√	≈
barium sulphate		√	√
beer		√	√
benzene		≈	≈
benzoyl chloride		≈	≈
borax		√	√
boric acid		√	√
brine		√	√
bromide	Traces, gas	#	≈
	100% (dry gas)	≈	≈
	Liquid	≈	≈
calcium chloride	Aq. solution	√	√
	20% in methyl alcohol	√	√
calcium hydroxide		√	√
calcium hypochlorite		√	√
carbon dioxide		√	√
carbonic acid		√	√
carbon monoxide		√	√
carbon tetrachloride		#	≈
castor oil		√	√
chloric acid		√	√
chlorine	100% (dry gas)	√	#
	10% (moist gas)	#	#
chlorine water	Sat. solution	#	#
chloroform		≈	≈
chrome alum		≈	≈
chromic acid	Plating solution	√	√
cider		√	√
citric acid		√	√
copper chloride		√	√
copper cyanide		√	√
copper nitrate		√	√
copper sulphate		√	√
cupric sulphate		√	√
cyclohexanone		≈	≈
detergent, synthetic	All concentrations	√	√
developers, photographic		√	√
dextrin		√	√
dextrose		√	√
dialo salts		√	√
dichlorodifluoromethane		≈	≈
diethyl ether		≈	≈
emulsifiers	All concentrations	√	√
emulsions, photographic		√	√
ethyl acetate		≈	≈
ethylene glycol		√	√
ethylene oxide		≈	≈
fatty acids		√	√
ferric chloride		√	√
ferric nitrate		√	√
ferric sulphate		√	√
ferrous ammonium citrate		√	√

Chemical	Concentration	Unplasticised PVC	
		20°C	60°C
ferrous chloride		√	√
ferrous sulphate		√	√
fixing solution, photographic		√	√
fluorine		#	#
formaldehyde	40% w/w water	√	√
formic acid	50% solution	√	#
	100% solution	√	≈
fructose		√	√
fruit pulp		√	√
glyucose		√	√
glycerol		√	√
grape sugar		√	√
heptane		√	√
hydrobromic acid	100%	√	√
hydrochloric acid	22% aq. solution	√	√
	Concentrated	√	√
hydrochloric acid	40% aq. solution	√	#
	60% aq. solution	#	≈
	Concentrated	≈	≈
hydrogen bromide	Anhydrous	√	√
hydrogen chloride	Anhydrous	√	√
hydrogen fluoride	Anhydrous	√	√
hydrogen peroxide	3% (10vol)	√	√
	12% (40 vol)	√	√
	30% (100 vol)	√	√
	90% and above	√	√
hydrogen sulphide		√	√
iodine	Solution in potassium iodide	≈	≈
lactic acid	10% aq. solution	√	√
	100%	≈	≈
lanoline		√	√
linoleic acid		√	√
linseed oil		√	√
magnesium hydroxide		√	√
maleic acid	50% aq. solution	√	√
	Concentrated	√	#
metallic soaps (water soluble)		√	√
methyl bromide		≈	≈
methyl chloride		≈	≈
methyl cyclohexanone		≈	≈
methyl ethyl ketone		≈	≈
methyl isobutyl ketone		≈	≈
methylated spirit		√	√
methylene chloride		≈	≈
milk		√	√
mineral oil		√	√
mixed acids (sulphuric/nitric Various proportions)		#	≈
molasses		√	√
naphtha		√	√
naphthalene		≈	≈
nicotine		√	√
nitric acid	5% aq. solution	√	√
	50% aq. solution	√	#
nitrobenzene		≈	≈
oleic acid		√	√
oxalic acid		√	√
oxygen		√	√
ozone		√	√
paraffin		√	√
pentane		√	√
petrol		√	√
phosphoric acid	30% aq. solution	√	√
	95% aq. solution	√	√
photographic developers		√	√
potassium bromide		√	√
potassium carbonate		√	√
potassium cyanide		√	√
potassium ferricyanide		√	√
potassium hydroxide	10% aq. solution	√	√
	Concentrated	√	√
potassium hypochlorite		√	√
potassium permanganate		√	√
propane		√	√
propylene glycol		√	√
propylene oxide		≈	≈
saccharose		√	√
sea water		√	√
silver nitrate		√	√
soap solution		√	√
sodium bicarbonate		√	√
sodium bisulphite		√	√
sodium borate		√	√
sodium bromide		√	√
sodium carbonate		√	√
sodium chlorate		√	√
sodium chlorite		√	√
sodium chloride		√	√
sodium cyanide		√	√
sodium ferricyanide		√	√
sodium ferrocyanide		√	√
sodium fluoride		√	√
sodium hydroxide	40% aq. solution	√	√
	Concentrated	√	√
sodium hypochlorite	15% Cl	√	√
sodium hyposulphate		√	√
sodium nitrate		√	√
sodium peroxide		√	√
sodium silicate		√	√
sodium sulphate		√	√
sodium sulphide	25% aq. solution	√	√
	Concentration	√	√
sodium sulphite		√	√
soft soap		√	√
surface active agents (emulsifiers, synthetic detergents and wetting agents)	All concentrations	√	√
starch		√	√
stearic acid		√	√
sucrose		√	√
sulphur	Colloidal	√	√
sulphur dioxide	Dry	√	√
	Liquid	#	≈
sulphuric acid	80% aq. solution	√	√
	90% aq. solution	√	#
	Fuming	≈	≈
sulphurous acid	10% aq. solution	≈	≈
tallow		√	√
tanning extracts		√	√
tartaric acid		√	√
transformer oil		√	√
trichloroethane		≈	≈
trichloroethylene		≈	≈
turpentine		√	√
vegetable oils		√	√
vinegar		√	√
water		√	√
wetting agents	All concentrations	√	√
wines and spirits		√	√
xylene		≈	≈
zinc carbonate		≈	≈
zinc chloride		√	√
zinc sulphide		√	√



# STERLING TECHNICAL INFORMATION

## STERLING PVC TRUNKING SYSTEMS

### GENERAL GUIDELINES

The properties of PVC-U (unplasticised polyvinyl chloride) make it an ideal cable trunking material. Resistant to impact and inert to atmospheric environments. The Sterling range is a 'clip-on' modular system ideal for the management of data, communication and power cables.

Available in Mono, Compact, Sterling and Sterling XL ranges, with multi-segregated compartments for both dado and skirting, mounting in either a horizontal or vertical plane.

Adaptable to accommodate future wiring alterations or additions.

### EXPANSION/CONTRACTION

PVC-U expands/contracts at a uniform rate approx 5.25mm in a 3 metre length for a temperature change of 25°C.

Adequate allowance is made for thermal movement, within the fittings, which have a 10mm overlap on each side. A 3mm gap between each length of trunking base is recommended.

### POSITIONING

When using as a skirting system sufficient clearance should be allowed for between the floor covering and the profile fittings which clip over the cover (5mm + floor covering).

### INSTALLATION

All Sterling bases are supplied with pre-cut elongated holes at 250mm centres along its length to facilitate fastening. Internal Couplers on the base units are not required.

When fastening the base use No. 8 round head screws and washers, avoid over tightening to permit thermal movement. When aluminium screening is to be fitted the pre-cut elongated holes cannot be used. Therefore, drilling of a 6mm hole through screening and base is necessary. Fasten in the manner previously described.

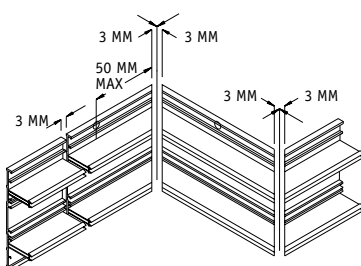
To cut the trunking use a fine toothed panel or power jig-saw. The cutting does not have to be critical as the external profile fittings overlap the joints by up to 10mm and cover any inaccuracies. An electric variable angle jig-saw will aid with the cutting to length and the 45 degree mitres of the trunking base.

### SINGLE LENGTHS

Where it is required to fit a single length of trunking between two inside walls (under 3 metres) it is advisable to place an additional coupler set in the centre of the trunking run to facilitate the removal of the cover if no accessory has been fitted.

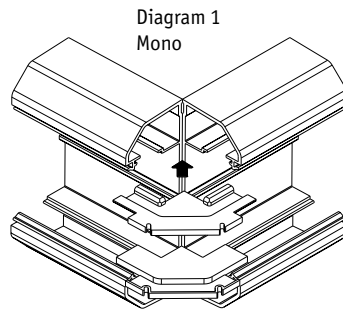
### JOINTS AND BENDS

All joints should have a 3mm gap to allow for expansion and at corners the trunking base MUST be mitred to ensure total enclosure of trunking if no internal segregator is to be fitted. This is not critical as the fittings cover the joint and overlap the trunking covers.



### MONO EXTERNAL BENDS

Mono should be cut square at the corner and an internal segregator inserted as shown in Diagram 1 which gives additional retention to the clip-on fitting.

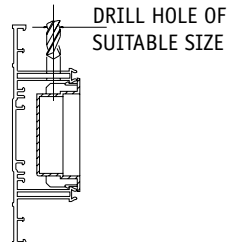


### MONO ACCESSORY BOXES

Remove the appropriate KO or drill the box and feed the cables into the box and clip into the desired location. For the outer compartments (Mono) clip the dividing segregator into position between each accessory box.

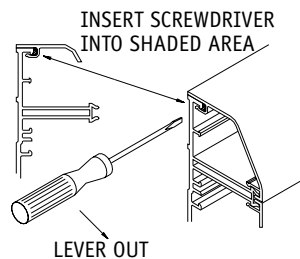
### COMPACT/STERLING ACCESSORY BOXES

Drill the main web and any Data Accessory Boxes in the desired position. For main compartment supply, remove the appropriate box knock-outs, feed the cable into box and then clip the box into trunking base. When assembled the lid is butt joined to the edge of the ETOP180. When boxes are installed consecutively a 14mm wide spacer (ES1) is required to cover the space between the boxes. All cut edges of lid are concealed by the ETOP180.

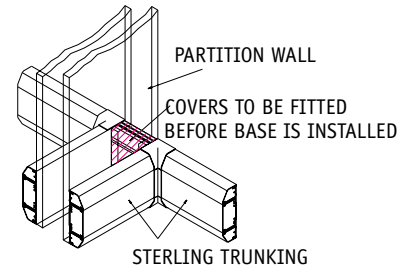


### LID REMOVAL

The covers have been designed to remain in position irrespective of impact during normal conditions, minor undulations of the mounting surface, and to limit unauthorised removal. All lids peel off, although the angle and square lids should be eased from the base by inserting a terminal screwdriver between the captive legs of the lid and the base, by first removing an external fitting.

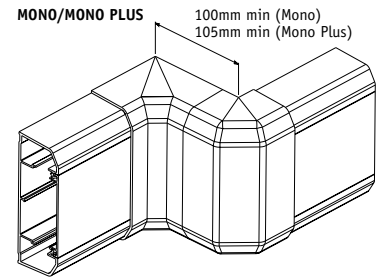


### Method of continuing Mono, Compact, Sterling and Sterling XL through a partition wall.

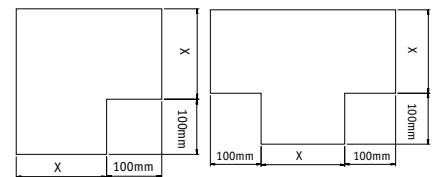
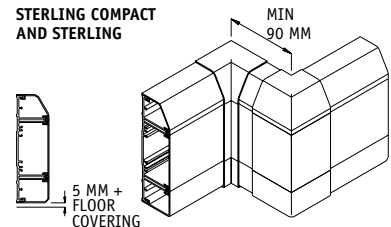


### DIMENSIONAL REFERENCE FOR OFFSETS FLAT ANGLES AND TEES

The minimum double set that can be accommodated in the same plane (from internal to external bend), is shown below.



### STERLING COMPACT AND STERLING



X = Height of Profile

### Mono (Tee only)

1 = 100mm

### Mono

1 = 140mm

### Compact

1, 2 = 130mm

3 = 181mm

### Sterling Profile

1, 2, 3 = 167mm

4, 5 = 218mm

6 = 268mm

11, 12, 13 = 255mm



## STERLING TECHNICAL INFORMATION continued

### MATERIAL DATA ABS

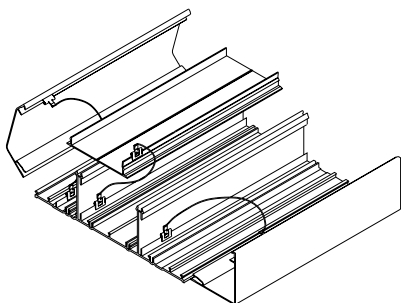
The products are produced in High Impact ABS grade material capable of withstanding the most hazardous conditions on site and which exceeds the most stringent requirements of the British Standards.

#### Characteristics of High Impact ABS

Vicat Softening Point ISO 306		80°C
Density		1.18g/cm <sup>3</sup>
Material	UL	UL listed
Flammability	UL94	V-1 at 1.5mm V-0 at 2.00mm
Flammability	BS4678:PT4:1982	Pass
Water Absorption	ASTM D570	0.3%

### EARTHING (Aluminium)

Covers, base and metallic fittings are to be cleaned of protective coating and earth bonded. Incoming earth connectors are made using the LBT1 bonding assembly installed in the earth channel of the base. For circuits protected by a device greater than 32A, the connector LBT2 is required to bond two lengths of base together. In final ring or radial 32A circuits the bonding strap LBS1 may be used in the earth channel for bonding lengths of trunking. Covers and metallic fittings should be bonded using the bonding strap LBS2 onto the earth upstand.



#### Bonding Terminal (LBT1)

Terminating the incoming earth to the trunking base. Cable capacity 16mm<sup>2</sup>.

#### Bonding Connector (LBT2)

Base earth continuity link for 63A Busbar.

#### Bonding Strap (LBS1) 4.0mm<sup>2</sup>

Base earth continuity strap for 32A system.

#### Bonding Strap (LBS2) 1.5mm<sup>2</sup>

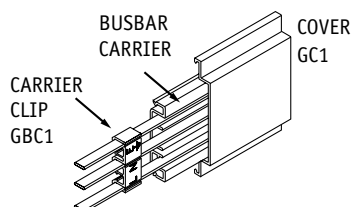
Base to cover/end cap earth continuity link.

### BUSBAR ASSEMBLY

Busbar Assembly (GRA1) 63 Amp distribution system comes complete for installation directly into the above trunking systems.

**For Busbar fittings and accessories please refer to relevant sections.**

### STERLING



### STERLING TWIN PLUS

Sterling Twin Plus provides a fully integrated solution for the installation of high performance data and power cables in perimeter locations. The system has an extensive range of moulded fittings that incorporate a large 50mm bend radius control that is crucial to optimum cable performance. These fittings have also been designed to give improved appearance and security to surface cables. The twin segregated compartments and self aligning two-piece fittings, offer ease of access to each individual compartment for greater safety. Marshall-Tufflex Sterling Plus is an efficient economical solution to power and high performance data cable management.

#### POSITIONING

When using as a skirting system, sufficient clearance should be allowed for between the floor covering and the trunking (5mm + floor covering).

#### INSTALLATION

**PVC-U:** The Sterling Twin Plus base in PVC-U is supplied with pre-cut elongated holes at 250mm centres along its length to facilitate fastening. It should be secured at 500mm intervals and within 50mm of the end on each base section.

**Aluminium:** Sterling Twin Plus aluminium bases should be secured every 750mm utilising the grooves in the base to facilitate the drilling of 6mm clearance holes.

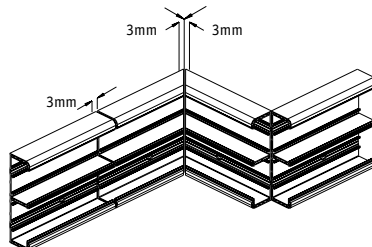
Internal couplers are not required on either PVC-U or aluminium base units.

When securing the base, use No. 8 round head screws and washers and avoid over-tightening to permit thermal movement. It is recommended that the use of plastic caps over screw heads to provide protection to the installed cables.

To cut the trunking base, use a fine-toothed saw or power tool. An electric variable angle jigsaw will also aid with the cutting to length and the 45-degree mitre.

#### JOINTS AND BENDS

At each joint, 3mm should be left for expansion. Internal bends must be mitred to ensure total enclosure of trunking. External bends should be cut square, flat bends must be mitred at 45 degrees, tees and crossovers are available pre-fabricated from the Sterling Twin Plus Range of fittings. None of the cutting is critical as the external moulded clip-on fittings have a built-in 7mm overlap for the lid and sidewalls to cover any inaccuracies.



#### SINGLE LENGTHS

Where it is required to fit a single length of trunking between two inside walls (under 3metres), it is advisable to place an additional coupler set in the centre of the trunking run in order to facilitate the removal of the cover if no accessory has been fitted.

### MMT2/MMT4 ADAPTORS

Adaptors are available from the Sterling Twin Plus range of fittings. Two methods of fixing are as follows:

1. drill a suitable hole in the sidewall of the Sterling Twin Plus base, thread cables through the hole and into the installed Mini Trunking. (Mini Trunking system technical information on page 220 of the main catalogue.)
2. cut the sidewall of the Sterling Twin Plus base to aid cable installation

None of the cutting is critical as the clip-on fittings have a built-in overlap for the lid and sidewalls. (For the installation of the Mini Trunking accessory boxes, shrouded entry boxes, end caps and lid see page 220 in the main catalogue.)

### BUSBAR ASSEMBLY

Upgrades the trunking to a 63A Busbar distribution system. Comprises: carrier support, carrier clip, Busbar rails, protective cover and cover screws. Can be fitted in either compartment of the base. Requires Busbar adaptor (EBS 60) to position the Busbar assembly within the trunking base (see page 209 in main catalogue).

For Busbar fittings, accessories and installation please refer to relevant sections of the main catalogue.

### ACCESSORY BOXES

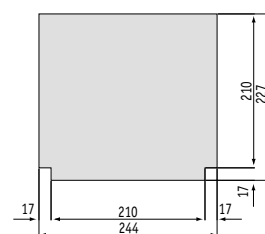
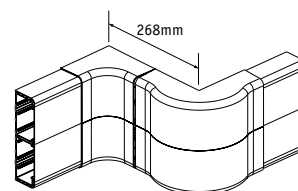
Drill the main web if the accessory box is to be mounted in the alternative compartment to the supply. For boxes in the same compartment supply, remove the appropriate box knock-outs, feed the cable into box and then clip the box into trunking base. When assembled, the lid is butt joined to the edge of the box (ESSB1/2/3 only) which is subsequently covered when the accessory is fitted. When boxes are installed consecutively, a 14mm wide spacer (ES1) is required to cover the space between the boxes. All cut edges of lid are concealed by the accessory or external fitting.

### LID AND FITTINGS

Install radius inserts according to instructions supplied with the individual fitting. When the cable installation is completed, start at a convenient point and snap-clip the lid and fitting alternately into place. Ensure the fitting overlaps the lid completely

### DIMENSIONAL REFERENCE FOR OFFSETS AND TEES

The minimum double set that can be accommodated in the same plane (from internal to external bend).

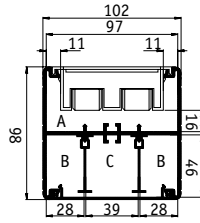


# STERLING CABLE CAPACITIES

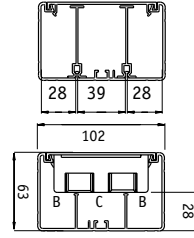
## DIMENSIONS AND CABLE CAPACITIES FOR POWERPOLE & POST

**Note:** \*The Sterling PowerPole is suitable for both solid and suspended ceilings up to 3.6 metres high. An alternative adjusting slide which can be extended to one metre is available for additional heights within the ceiling void.

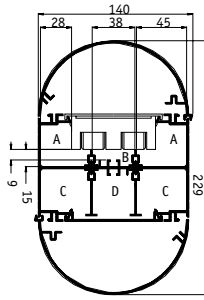
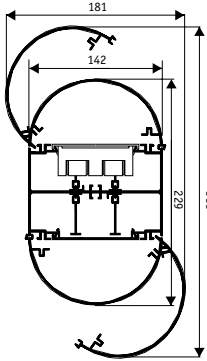
Full installation instructions are included within each pack.



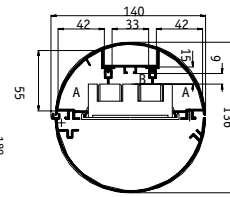
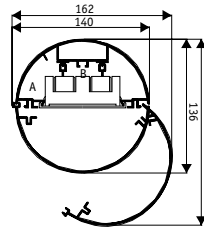
**PP685 & PP36001\***  
 A = 2017 sq mm total area 45% space factor = 907 sq mm.  
**Without Accessory Box**  
 A = 4284 sq mm total area 45% space factor = 1927 sq mm.  
 B = 1148 sq mm total area 45% space factor = 516 sq mm.  
 C = 1547 sq mm total area 45% space factor = 696 sq mm.



**PP36001**  
 B = 1115 sq mm total area 45% space factor = 502 sq mm.  
 C = 1119 sq mm total area 45% space factor = 504 sq mm.



**NPPC80671 & NPPE811142**  
 A = 1313 sq mm total area 45% space factor = 591 sq mm.  
 B = 505 sq mm total area 45% space factor = 227 sq mm.  
 C = 1798 sq mm total area 45% space factor = 809 sq mm.  
 D = 1628 sq mm total area 45% space factor = 733 sq mm.

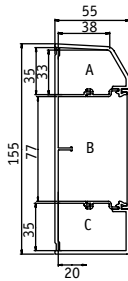


**NPPC80671 & NPPC3600721\***  
 A = 1238 sq mm total area 45% space factor = 557 sq mm.  
 B = 505 sq mm total area 45% space factor = 227 sq mm.

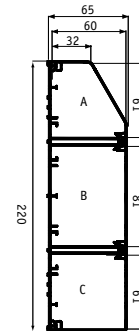
## DIMENSIONS AND CABLE CAPACITIES FOR POWER DATA TRUNKING

Type of Conductor	Size	Cable Factor	Max. No. Cables in A and B @ 45% Fill
Stranded PVC Power	1.5mm <sup>2</sup>	8.6	248
Stranded PVC Power	2.5mm <sup>2</sup>	12.6	169
Stranded PVC Power	4.0mm <sup>2</sup>	16.6	128
Stranded PVC Power	6.0mm <sup>2</sup>	21.2	100
Cat. 5e UTP	ø5.5mm*	30.2	70
Cat. 5e STP	ø6.0mm*	36.0	59
Cat. 6 UTP	ø6.5mm*	42.2	50
Cat. 6 STP	ø7.0mm*	49.0	43

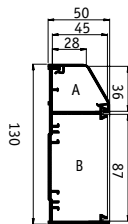
\*Typical values, check with manufacturer.



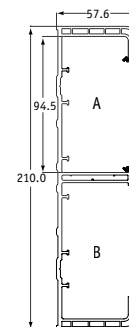
**STERLING MONO 30**  
 A = 1450 sq mm total area 45% space factor = 652 sq mm.  
 B = 3556 sq mm total area 45% space factor = 1600 sq mm.  
 C = 1646 sq mm total area 45% space factor = 741 sq mm.



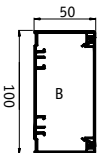
**STERLING XL PROFILE 202**  
 A = 2815 sq mm total area 45% space factor = 1267 sq mm.  
 B = 4766 sq mm total area 45% space factor = 2145 sq mm.  
 C = 3522 sq mm total area 45% space factor = 1585 sq mm.



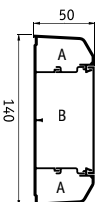
**STERLING COMPACT 1**  
 A = 1280 sq mm total area 45% space factor = 576 sq mm.  
 B = 3763 sq mm total area 45% space factor = 1693 sq mm.



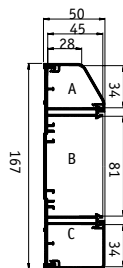
**STERLING TWIN PLUS**  
 A and B = 4755 sq mm 45% space factor 2140 sq mm.



**STERLING MONO 10**  
 B = 4141 sq mm total area 45% space factor = 1863 sq mm.



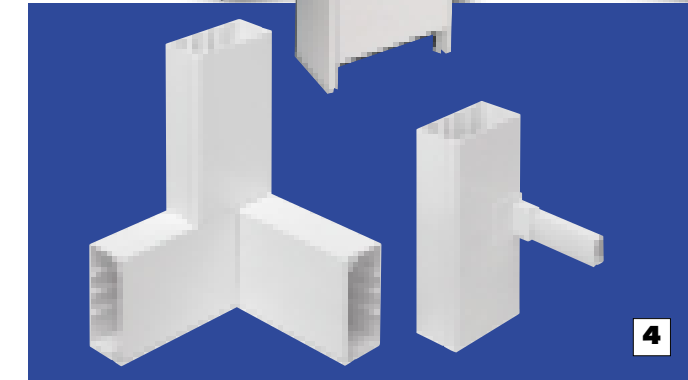
**STERLING MONO 20**  
 A = 1024 sq mm total area 45% space factor = 461 sq mm.  
 B = 3512 sq mm total area 45% space factor = 1580 sq mm.



**STERLING PROFILE 2**  
 A = 1197 sq mm total area 45% space factor = 538 sq mm.  
 B = 3556 sq mm total area 45% space factor = 1600 sq mm.  
 C = 1451 sq mm total area 45% space factor = 652 sq mm.

# BESPOKE SOLUTIONS

Some examples of the many bespoke solutions prepared by Marshall-Tufflex to overcome our customers installation problems.



1. Pre-formed trunking for the Youth Technology Centre in London.
2. Sterling Profile 1 to Mono 10 Flat Bends and Tee.
3. Sterling Profile 202 Reducer.
4. MTRS 100 x 50 Corner Tee and 150 to MMT2.
5. Compact 2 to Profile 3.
6. Ceiling Service Units - Sterling XL with four lids has provided massive overhead service units for the laboratories in the Cambridge Science Park. All the units carry gas, telecoms, data and power to laboratory workbenches below. All outlets have specially adapted push-click fittings for easy use. (new)
7. Sterling Profile 2 with 123° Angles, 19° Compound Angles and special Corner Tees, all adapted for use throughout the Natural History Museum in London. Sterling Data Fittings with big 50mm bend radius and special deep boxes were also used in this application.

Contact our Technical Hotline +44 (0) 1424 443348 for advice.





Certificate No. 05393  
Registration  
BS EN ISO 9001

Distributor

**MARSHALL-TUFFLEX INTERNATIONAL LTD**

Churchfields Industrial Estate, Hastings, East Sussex TN38 9PU United Kingdom  
International Sales: +44 (0) 1424 856000. International Fax: +44 (0) 1424 856666  
E-mail: [sales@marshall-tufflex.com](mailto:sales@marshall-tufflex.com) Web: [www.marshall-tufflex.com](http://www.marshall-tufflex.com)

