

## RETAIL AND LEISURE MARKET UPDATE



**SOLD**  
**Newmarket Inn, Old Brighton Road, Lewes,**

- 1.06 Acres Class C1 Hotel
- Sold to Starbucks franchisee



**SOLD**  
**94 High Street, Gosport**

- 1,464 sq ft Class E premises
- Sold to a private investor



**LET**  
**45 Preston Street, Brighton**

- 1,120 sq ft
- Let to a local pub operator



**LET**  
**71 Osborne Road, Southsea**

- 1,780 sq ft Class E building
- Let to Southsea Play Café Ltd



**SOLD**  
**59 Queens Road, Brighton**

- 1,043 sq ft and upper parts
- Sold to publican



**LET**  
**1A Fareham Park Road, Fareham**

- 341 sq ft Class E premises
- Let to KBBRA Limited



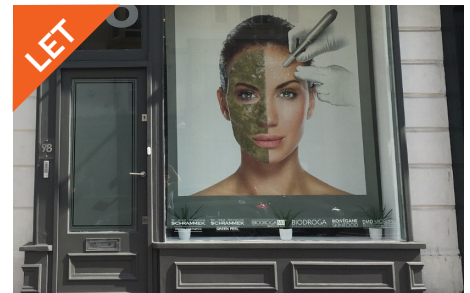
**LEASE ASSIGNMENT**  
**Sea Beach House Hotel, 39-40 Marine Parade, Eastbourne**

- Class C1 Hotel
- Lease Assignment to private individual



**LET**  
**37 Market Parade, Havant**

- 682 sq ft Class E unit
- Let to a private individual



**LET**  
**98 Western Road, Hove**

- 787 sq ft Class A1 unit
- Let to a national chain



**LET**  
**16 Palmerston Road, Southsea**

- 837 sq ft Class E unit
- Let to Grape Tree



**LET**  
**35 Waterloo Street, Hove**

- 447 sq ft Class A1 unit
- Let to a private tenant



**LET**  
**2 West Quay House, Fareham**

- 906 sq ft Class E unit
- Let to a private individual



**18 Sydney Street, Brighton**

- 674 sq ft Class A1 unit
- Lease Assignment to a local business



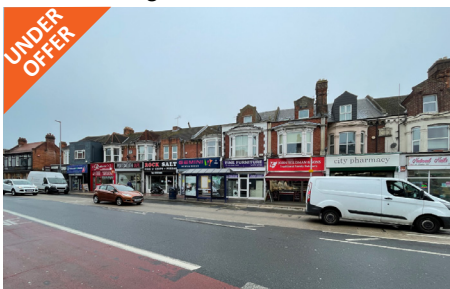
**13 Palmerston Road, Southsea**

- 540 sq ft Class E premises
- Let to Tidal Vape Limited



**12 Southgate, Chichester**

- 596 sq ft Class E unit
- Under Offer



**109 London Road, Portsmouth**

- 884 sq ft Class E premises
- Under Offer



**31-32 East Street, Chichester**

- 1,692 sq ft Class A1 unit
- Under Offer



**59 Palmerston Road, Southsea**

- 936 Class E premises
- Under Offer

**FLUDE PROPERTY CONSULTANTS' AGENCY TEAM**



**Andrew Halfacree**  
Brighton Office  
Director  
T: 01273 740385  
E: a.halfacree@flude.com



**Mark Minchell**  
Chichester Office  
Director  
T: 01243 929136  
E: m.minchell@flude.com



**Sebastian Martin**  
Portsmouth Office  
Director  
T: 023 9262 9007  
E: s.martin@flude.com



**Ed Deslandes**  
Brighton Office  
Director  
T: 01273 740396  
E: e.deslandes@flude.com



**Will Thomas**  
Brighton Office  
Director  
T: 01273 740398  
E: w.thomas@flude.com



**Brandon White**  
Chichester Office  
Surveyor  
T: 01243 929141  
E: b.white@flude.com



**Alice Masterman**  
Portsmouth Office  
Graduate Surveyor  
T: 023 9262 9006  
E: a.masterman@flude.com



**Lizzie Cottrell**  
Chichester Office  
Surveying Executive  
T: 01243 929135  
E: l.cottrell@flude.com



**Aaron Lees**  
Brighton Office  
Surveying Executive  
T: 01273 740387  
E: a.lees@flude.com



**Nick Martin**  
Brighton Office  
Trainee Surveyor  
T: 01273 740381  
E: n.martin@flude.com



**Noah Minchell**  
Chichester Office  
Trainee Surveyor  
T: 01243 819000  
E: n.minchell@flude.com