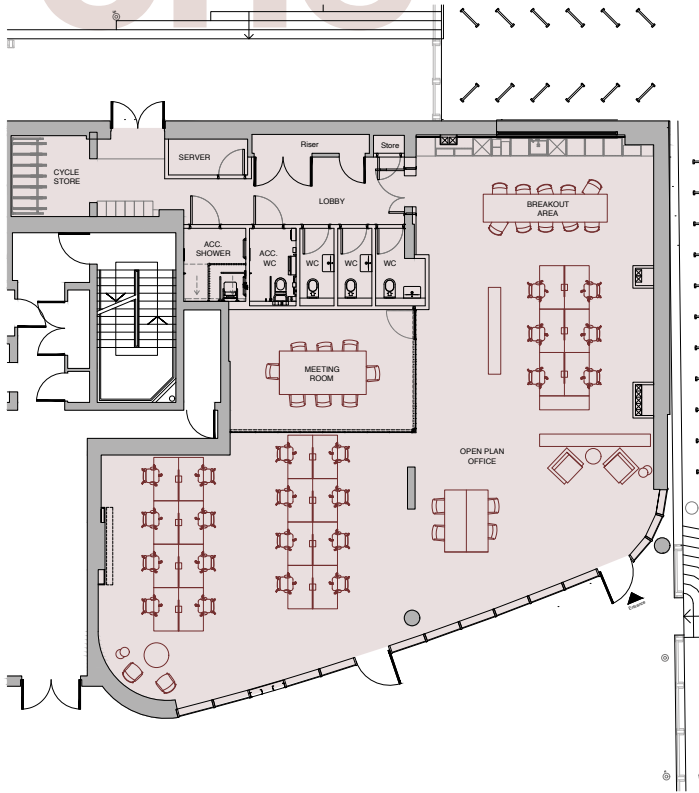


one



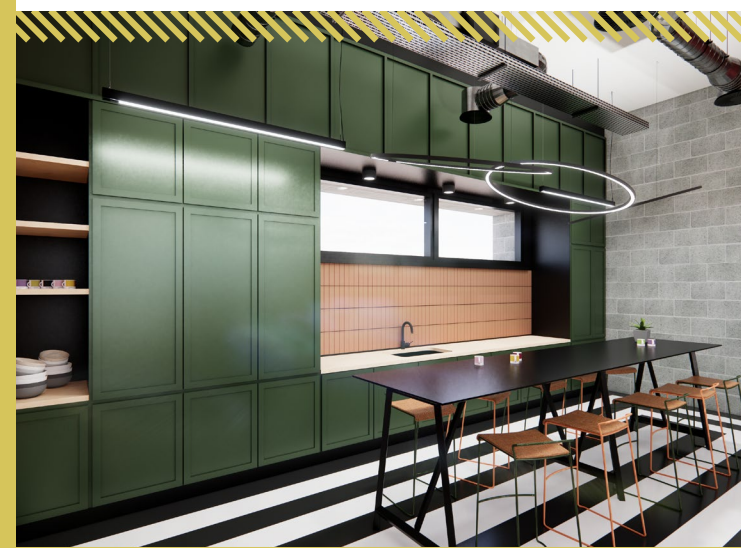
A circular inset image showing the office entrance. The entrance features a glass wall with the 'studioone' logo. The interior is visible through the glass, showing the office furniture and colorful wall art.

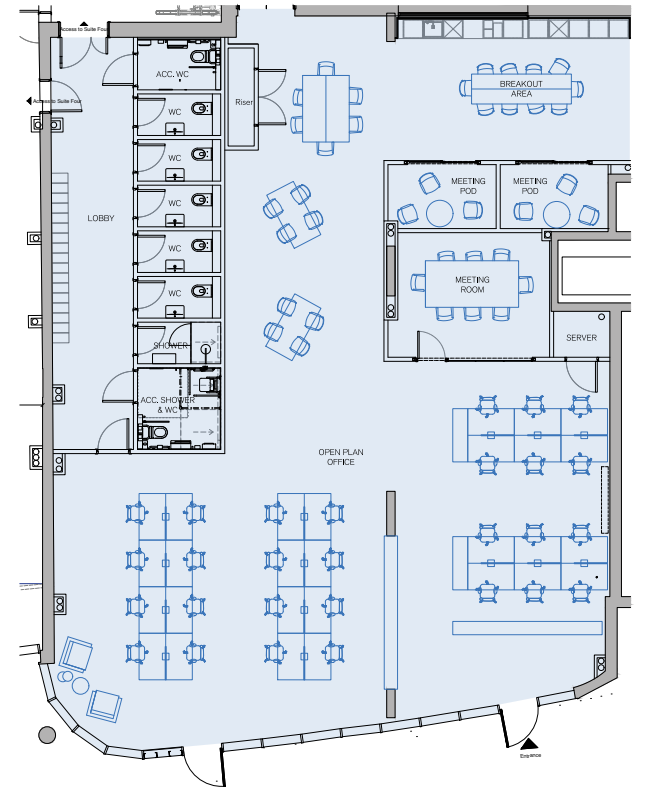
boardwalk studioone

BRIGHTON MARINA

2,885 ft²

(268 m²)



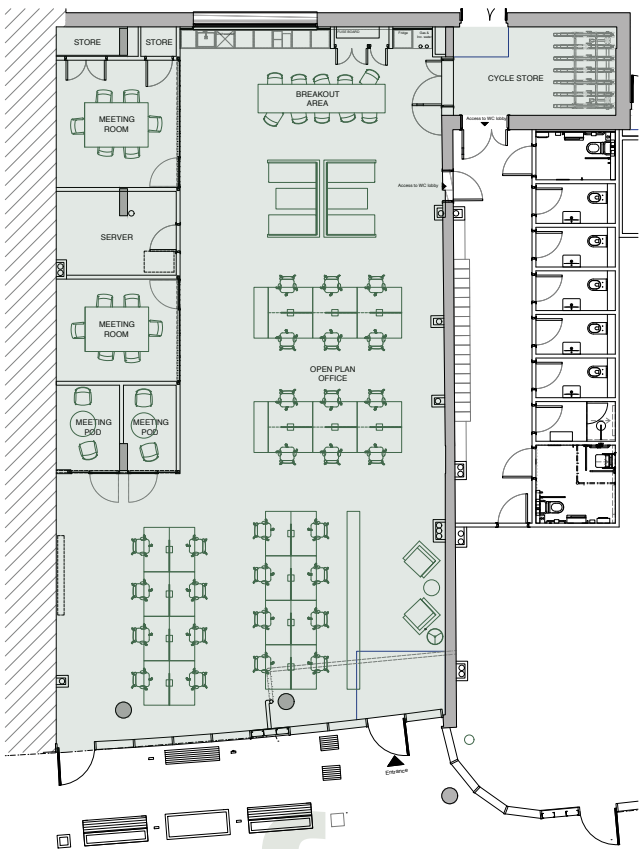


three

A circular inset image showing a different part of the office interior. It features a long, narrow kitchen or break area with a red wall, a blue countertop, and a wooden floor. There are several tables and chairs, and a large potted plant hanging from the ceiling. The walls are decorated with large, colorful geometric patterns in red, blue, and white.

boardwalk studiothree
BRIGHTON MARINA
3,897 ft²
(362 m²)





four



A circular graphic with a white border, containing text and a small image of the office entrance. The text inside the circle reads: 'boardwalk studiofour', 'BRIGHTON MARINA', '2,896 ft²', and '(269 m²)'. The small image shows the glass entrance to the office with the 'studiofour' logo on the glass and a '4' sign above the door.

