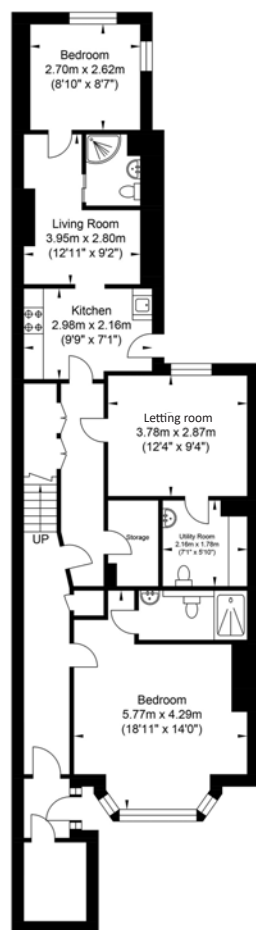


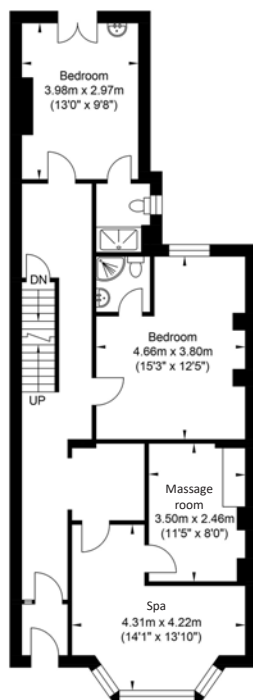


46 Upper Rock Gardens Brighton, East Sussex BN2 1QF

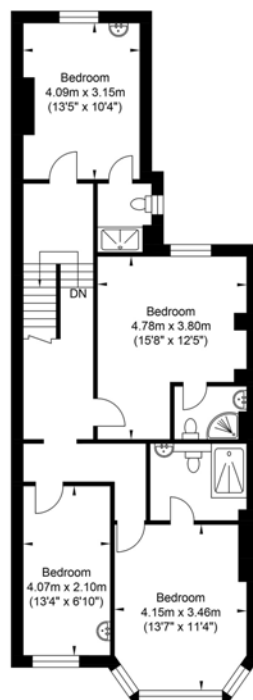
FLOOR PLAN For identification purposes only



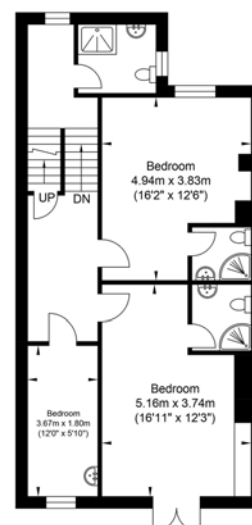
Lower Ground Floor
Approximate Floor Area
988.98 sq ft
(91.88 sq m)



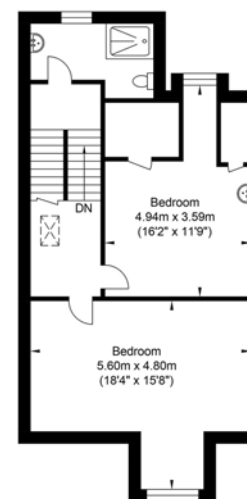
Ground Floor
Approximate Floor Area
841.09 sq ft
(78.14 sq m)



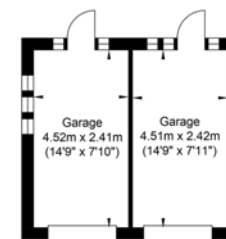
First Floor
Approximate Floor Area
843.02 sq ft
(78.32 sq m)



Second Floor
Approximate Floor Area
686.30 sq ft
(63.76 sq m)



Third Floor
Approximate Floor Area
601.59 sq ft
(55.89 sq m)



Garage
Approximate Floor Area
239.81 sq ft
(22.28 sq m)



Approximate Gross Internal Area = 390.27 sq m / 4200.83 sq ft
Illustration for identification purposes only, measurements are approximate, not to scale.