



TO LET

Unit 1 & 1a Apollo Business Park
Cheesemans Lane, Hambrook, Chichester, West Sussex, PO18 8UE



Unit 1 & 1a Apollo Business Park
Cheesemans Lane, Hambrook, Chichester, West Sussex, PO18 8UE

Key Features

- Flexible B1/B8 units from 913-2,194 sq ft, with single & two-storey and combination available
- Available Q1 2026 - Targeting EPC A
- 3.7m ceiling heights - suitable for racking, vehicle lifts, and light industrial use
- Electronically operated sectional doors (3m x 3.9m) and concrete flooring
- Full three-phase electricity, internal/external LED lighting, and leased line fibre broadband
- Secure gated site with twin electric gates, high-security perimeter fencing, and full CCTV coverage
- Extensive parking with allocated and overflow spaces, including 20%+ with EV chargers
- Picturesque setting with strong road links
- On-site container storage and future expansion potential
- Excellent HGV access and strong connectivity to A27, A259, A3, M3, and Nutbourne Station (1.3 miles)





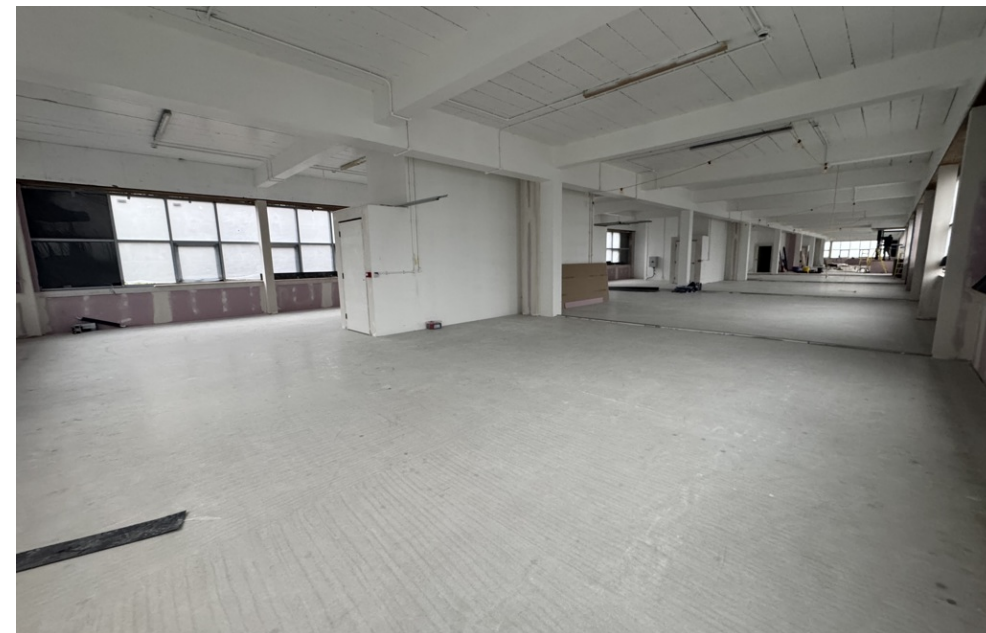
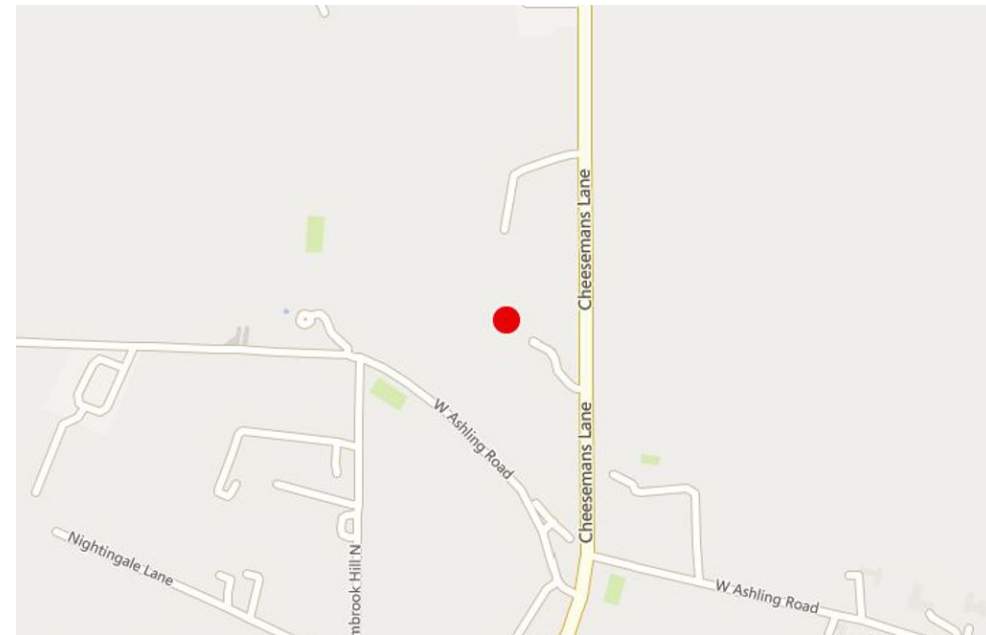
Location & Situation

Apollo Business Park occupies a prime position on Cheesemans Lane, approximately 5 miles west of the historic Cathedral City of Chichester and 6 miles from Havant. It benefits from immediate access to Common Road to the north and the A259 coastal route to the south, with the A27 just a 5-minute drive away, offering fast links to Portsmouth, Brighton, and the wider South Coast.

Further afield, the site offers excellent access to both the A3 and M3 corridors, making it ideal for businesses needing to connect efficiently to London, the Midlands, and the national motorway network.

Nutbourne railway station is just 1.3 miles to the south, offering regular services across the South Coast and into London, making the site accessible for both staff and logistics.

Apollo's unique advantage is its location outside of major urban centres - avoiding the congestion and logistical headaches often associated with city-based estates. Despite the peaceful, semi-rural surroundings, demand for modern commercial space in this area is high and availability is extremely limited, making Apollo a rare opportunity in a strategic and stress-free setting.





Unit 1 & 1a Apollo Business Park
Cheesemans Lane, Hambrook, Chichester, West Sussex, PO18 8UE

Description & Accommodation

Apollo Business Park is undergoing a complete and high-quality transformation from a former HQ complex into a brand-new, thoughtfully designed business park. Every visible surface across the site is being replaced - including all groundworks, cladding, glazing, personal access doors, electronically operated sectional loading doors, and insulation - to deliver a modern, energy-efficient development targeting a significantly improved EPC rating.

The site offers flexible and versatile accommodation across both ground and first floors, with unit sizes ranging from approximately 913 sq ft to 2,194 sq ft. Units can be easily combined to create larger spaces tailored to tenants' needs as required.

Each floor benefits from generous ceiling heights of 3.7m, with electronically operated sectional loading doors (3m high x 3.9m wide) at ground floor level, providing excellent access and usability.

The site is enclosed by a high-security perimeter fence and accessed via twin electric gates with a dedicated in-and-out traffic system, making it exceptionally secure and well suited to businesses with higher-value stock or equipment.

The layout allows for excellent HGV access, and parking provision is generous - with over 20% of spaces fitted with EV chargers and overall capacity far exceeding typical estates of this type. Further benefits include:

Full site-wide CCTV security system

Access to dedicated high-speed leased line fibre

Three-phase electricity supplied to every unit

Full external LED lighting and LED lighting throughout each property

The ability to scale operations with on-site container storage and additional future units

Area	Sq Ft	Sq M
Unit 1	913	84.82
Unit 1A	1,083	100.61
Total	1,996	185.43





Rateable Value

The rateable values are to be assessed upon completion of the development however the units have been designed to target the small business rates relief threshold. Further information on this is available upon request.

EPC

Targeting EPC A

Planning

Planning was obtained in 2025 to convert the site, previously used as the HQ for Charles Taylor Group (formerly CEGA), into a flexible E class (giii) business park. The full planning for the site is as follows;

"Refurbishment and redevelopment of existing buildings A and C and demolition and replacement of building B to create offices and light industrial units (use class E(g)(i-iii)), demolition of buildings D and E, installation of storage containers (use class B8) and associated works including reconfiguration of the car parking area to create additional parking spaces."

Full planning consent is available upon request.





Unit 1 & 1a Apollo Business Park
Cheesemans Lane, Hambrook, Chichester, West Sussex, PO18 8UE

Terms

The units are available individually or by way combinations, for new effectively full repairing & insuring lease terms to be agreed.

A service charge will be payable, contributing towards estate management and maintenance, with the landlords also insuring the building, with tenants subsequently reimbursing their fair portion.

Rent & accommodation schedule available on request.

Legal Fees

Each party to bear their own legal costs incurred.

VAT

Rents and prices are quoted exclusive of, but may be subject to VAT.



Further Information

Please contact the sole agents Flude Property Consultants:

Brandon White
b.white@flude.com
07925 284528

Will Thomas
w.thomas@flude.com
07786 234006

Flude Property Consultants for themselves and for the vendors or lessors of this property whose agents they are give notice that: i) these particulars are set out in good faith and are believed to be correct but their accuracy cannot be guaranteed and they do not form any part of any contract; ii) no person in the employment of Flude Property Consultants has any authority to make or give any representation or warranty whatsoever in relation to this property.

6 February 2026

